

BLACKBOX 610R

ELECTRONICS SET-UP SHEET

Voltage input:	2S LiPo
On resistance (Ω)	0.00043
Continuous current (A)	160
Dimensions (mm)	38.5 x 36.9 x 19.5
Weight w/o wires & fan (g)	45
Motor limit	4.5T
BEC	6.0 - 7.4V / 5A
Fan	Optional

DRIVER: Aydin Horne

EVENT: Fall Testing

TRACK: RC One

DATE: October 2023

VEHICLE: B6.4 - Modified 2wd

CONDITIONS: Indoors, carpet, medium-large, high grip

BATTERY: #27396 Reedy Zapper 4800 LP

TEMP: N/A

ESC INFO

FIRMWARE: 11858507

CAPACITOR TYPE: Stock

FAN: #27031 Reedy 10 mm

WIRE SIZE: 13 AWG

BRAKE

1A DRAG BRAKE: 16%

1B BRAKE STRGTH: 85%

1C INIT BRAKE: =Drag Brake

1D BRAKE FREQ: 12KHz

1E BRAKE PUNCH: Level 2

1F BRAKE MODE: Traditional

THROTTLE

3A PUNCH CTRL: Level 12

3B INIT THROTTLE: 1%

3C DRIVE FREQ: 12KHz

3D DEADBAND: 6%

3E CURRENT LIMIT: 100%

MOTOR POWER

EXPERT

4A BT SOFT PWR: 0deg

4B BT SOFT RNG: 25%

4C COAST VALUE: 0%

4D BOOST TIMING: 0deg

4E BOOST TIM ACT: RPM

4F BOOST ST RPM: 5000

4G BOOST END RPM: 20000

4H TURBO TIMING: 20deg

4J TURBO DELAY: 0.05sec

4K SLEW RATE: 10deg/0.1s

4L RELEASE RATE: 3deg/0.1s

STANDARD

5A TIMING LEVEL:

RADIO SETTINGS

THROTTLE EPA: EPA:100(D/R:89)

BRAKE EPA: EPA:100(D/R:90)

THROTTLE EXPO: -5%

MISC CONTROL

6A RUN MODE: F/B F/B/R

6B REVERSE PWR: 25% 50% 75% 100%

6C BATT CUTOFF: NONE 3.2V/CELL 3.4V/CELL

6D ESC TEMP CUT: OFF 221F/105C 257F/125C

6E MOT ROTATION: NORMAL REVERSE

6F BEC VOLTAGE: 6.0v

MOTOR SETTINGS

MOTOR: Reedy M4

WIND: #27446 5.5T

TIMING: 20*

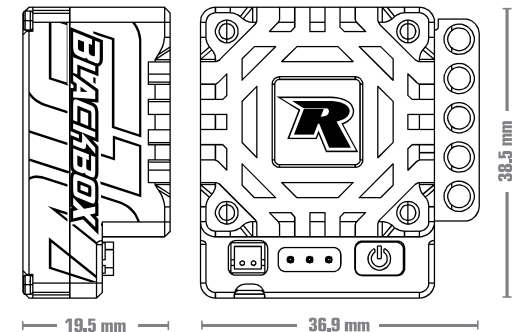
ROTOR: #27449 Reedy 13 mm

FDR/ROLLOUT: 21 / 78

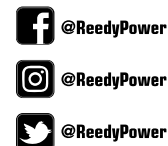
MISCELLANEOUS

SERVO: Reedy RT1705A

CHARGER: Reedy



NOTES:



www.ReedyPower.com