

For Immediate Release: December 12, 2023

New! Weight Bias Chassis for the RC8B4e

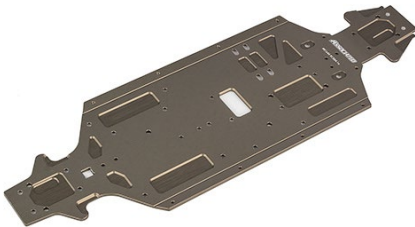
The new Team Associated FWB/RWB was in development during 2023 as Team Associated drivers wanted the option to shift weight rearward on lower grip ungroomed tracks.

Now available, racers can tune the RC8B4e's weight bias using two motor and center differential positions with the FWB/RWB chassis and adapter! Forward is the original location for maximum steering, and the rearward location gives more rear grip and lightens the front end for low grip or bumpy conditions.

Customers will need #81644 and #81645 to update their RC8B4e to the new chassis system (instructions are included). The #81581 104mm center dogbone from the original kit is used with the new parts. The #81646 replacement 96.5mm center dogbone set is sold separately for spare parts (it's included in #81645).

Also notable, the new chassis design installs the drivetrain in the REVERSE orientation from the original kit, and this provides a positive torque reaction that will aid in rear grip on power.

UPC	Part No.	Description	MSRP	MAP	Available
784695816442	81644	RC8B4e FWB/RWB Chassis	\$124.99	\$106.24	December 2023
784695816459	81645	RC8B4e FWB/RWB Adapter and 96.5mm Dogbone Set	\$29.99	\$25.49	December 2023
784695816466	81646	RC8B4e Center Dogbone Set, 96.5mm	\$22.99	\$19.54	December 2023



#81644 RC8B4.1e FWB/RWB Chassis



#81645 RC8B4e FWB/RWB Adapter and 96.5mm Dogbone Set



#81646 RC8B4e Center Dogbone Set, 96.5mm

Press Release online: <https://rc10.com/b4echassisinpr/>