

For Immediate Release: Sept. 14, 2016

New Fine Tuning Options for your RC8B3 and RC8T3!



#81194 Shock Rod Ends & Spring Cups, 20mm



#81221 Spring Collars, 20mm

20mm shock rod ends, spring cups, and collars allow a wider variety of 20mm sized springs that can be used, providing drivers with more options for fine tuning their vehicle. For RC8B3, RC8B3e, RC8T3, RC8T3e.

UPC: 784695 811942	#81194	Shock Rod Ends & Spring Cups, 20mm (4)	MSRP: \$9.99	BUY NOW!
784695 812215	#81221	Spring Collars, 20mm (2)	\$8.99	BUY NOW!



#81179 Bleeder Shock Caps, 16mm

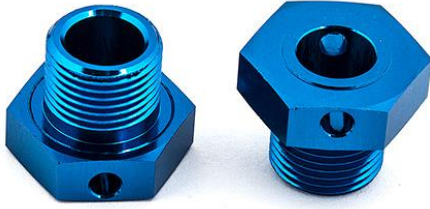


#81184 Bleeder Shock Cap Seals, 16mm

When used in combination, the bleeder shock caps and bleeder shock cap seals give drivers the ability to run emulsion-style shocks. Perfect for tracks with large jumps and flat landings, in addition to tracks with looser surfaces. For RC8B3, RC8B3e, RC8T3, RC8T3e.

UPC: 784695 811799	#81179	Bleeder Shock Caps, 16mm (2)	MSRP: \$21.99	BUY NOW!
784695 811843	#81184	Bleeder Shock Cap Seals, 16mm (4)	\$5.99	BUY NOW!

More parts on the next page!



#81079 RC8B3 Wheel Hexes, +1mm wide



#81080 RC8B3 wheel hexes, +2mm wide

Optional width wheel hexes alter the vehicle's handling by changing steering feel and vehicle roll stiffness. Wheel hex width is a great way to add or reduce effective steering and also gain or reduce roll stiffness. For RC8B3, RC8B3e.

UPC: 784695 810792	#81079	RC8B3 Wheel Hexes, +1mm wide (2)	MSRP: \$9.99	BUY NOW!
784695 810808	#81080	RC8B3 Wheel Hexes, +2mm wide (2)	\$9.99	BUY NOW!



#81085 Servo Saver Arm, aluminum

Aluminum servo saver arm adds significant strength with little weight. For RC8B3, RC8B3e, RC8T3, RC8T3e.

UPC: 784695 810853	#81085	Servo Saver Arm, aluminum (1)	MSRP: \$19.99	BUY NOW!
-----------------------	--------	-------------------------------	------------------	-----------------

