

RC10 B6.1 TEAM KIT

#90020 RC10B6.1 Team Kit

1:10 Scale 2WD Electric Off Road
Competition Buggy Kit



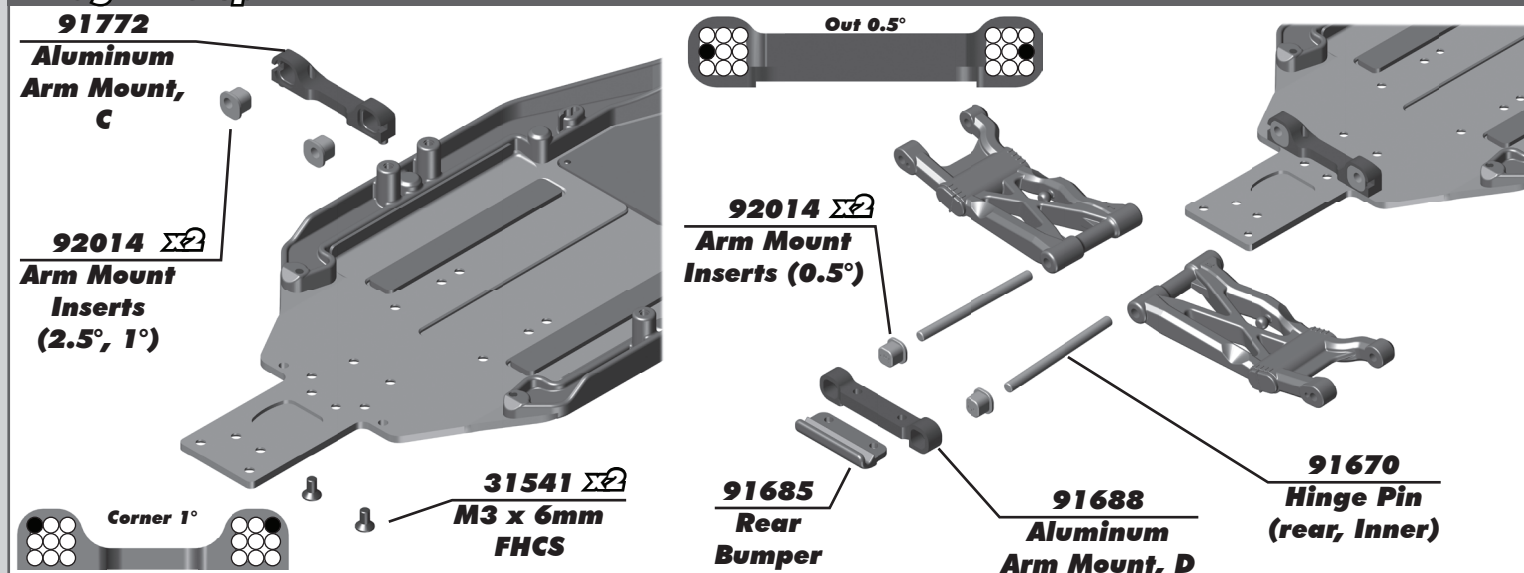
1:10 Scale 2WD Electric Off Road Competition Buggy Kit Manual & Catalog



CHAMPIONS *by* DESIGN

TeamAssociated.com

TEAM ASSOCIATED

:: Bag 4 - Step 2**:: Bag 4 - Step 3**

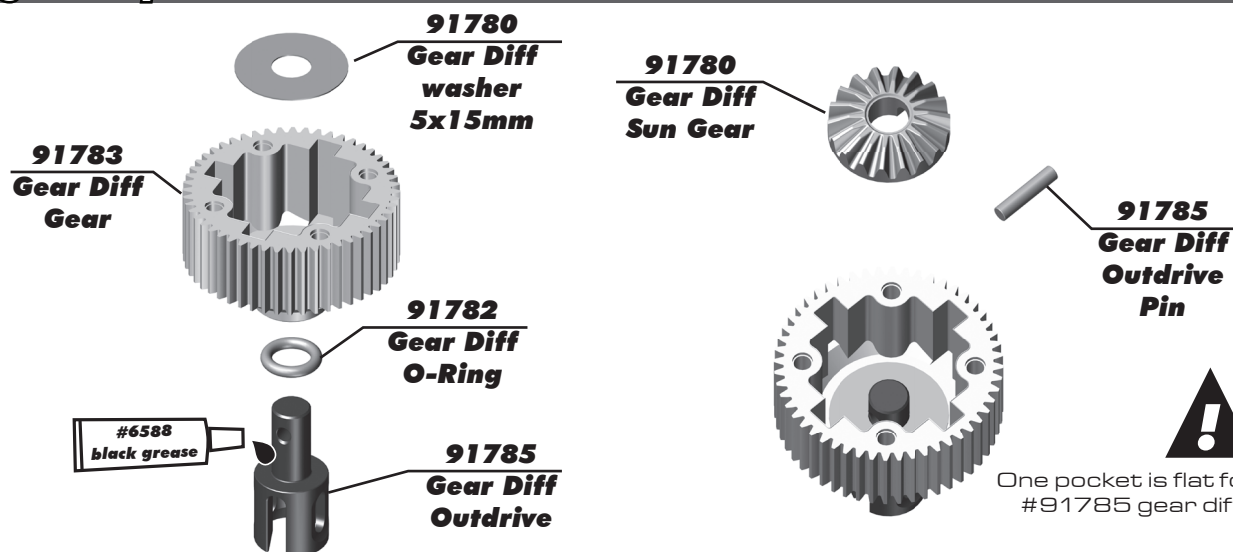
The (#91772) C and (#91688) D aluminum arm mounts allow for a large amount of setup combinations when using the (#92014) 0.5° and 1° arm mount inserts.

For a complete list of pill setup combinations, please visit our website by using the link or QR code below.

https://www.teamassociated.com/pdf/cars_and_trucks/RC10B6/B6_B6D_Pill-Chart.pdf

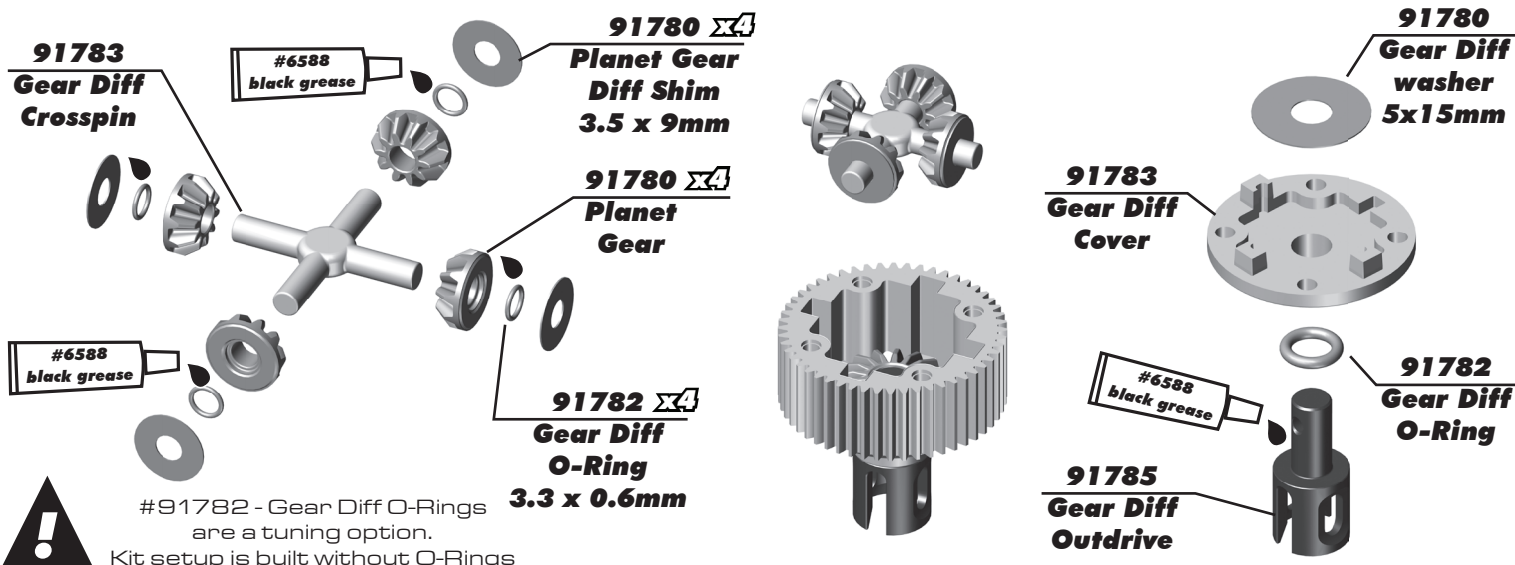


	Toe-In	Anti-Squat
C Plate Corner 1° D Plate Out 0.5°	2.5° Kit Setup	2° Kit Setup
Commonly used setups		
C Plate Out 0.5° D Plate Center	2.5°	1°
C Plate Out 1° D Plate Center	2°	1°

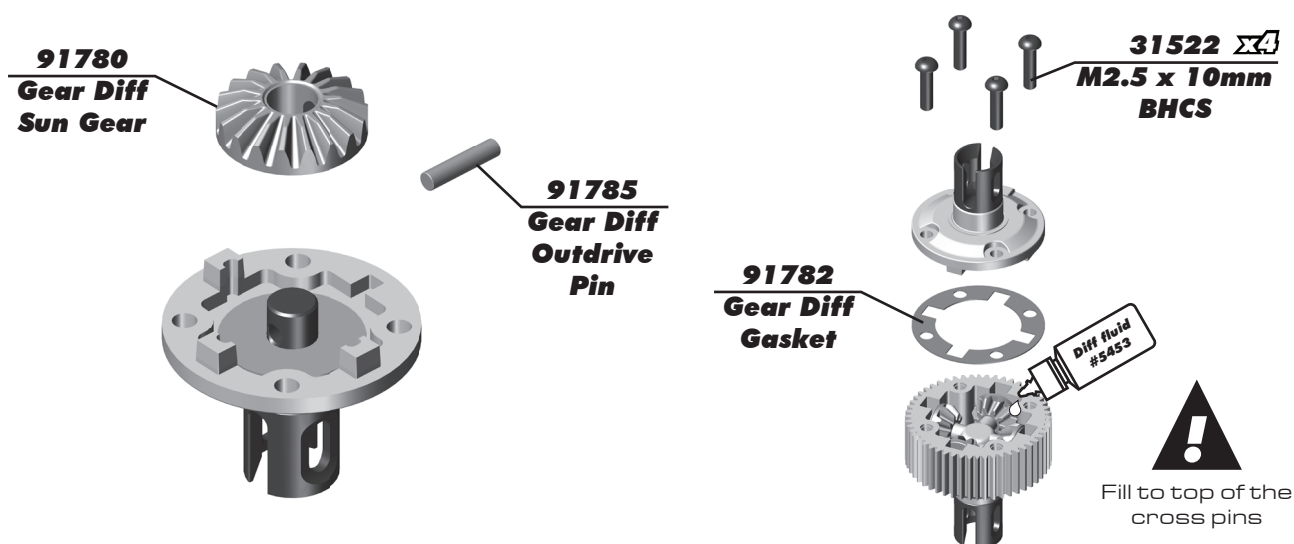
:: Bag 5 - Step 1

One pocket is flat for inserting the #91785 gear diff outdrive pin.

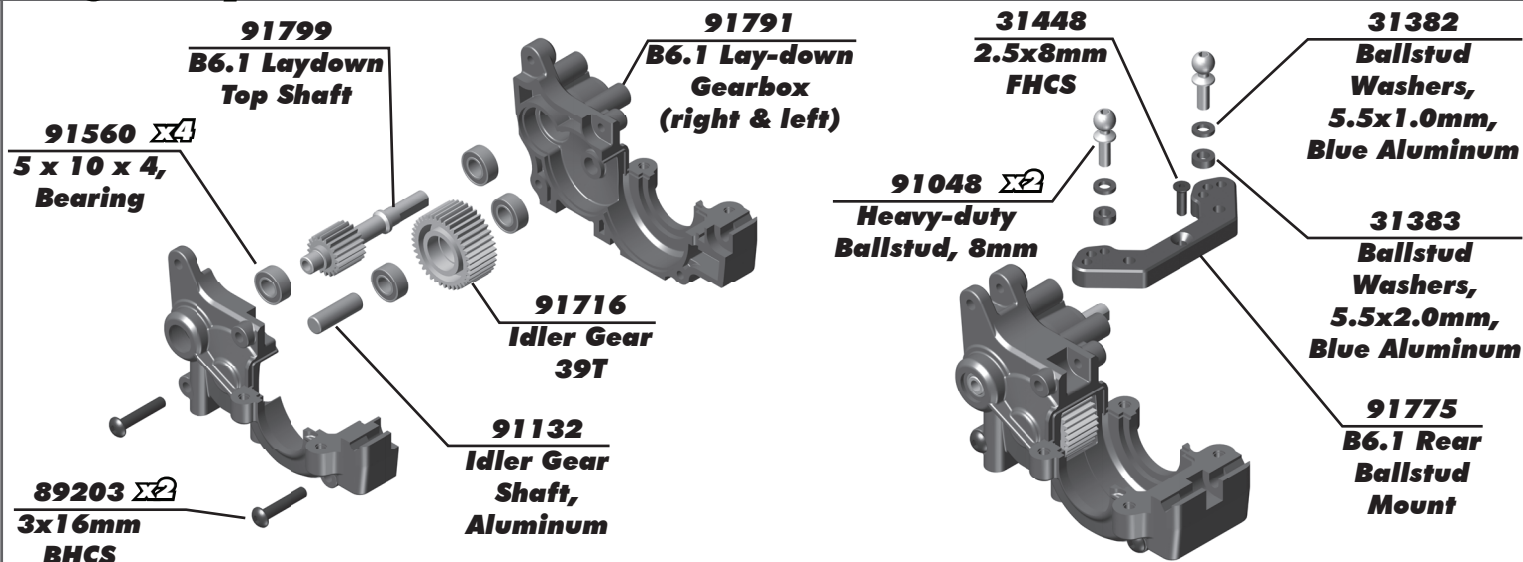
:: Bag 5 - Step 2



:: Bag 5 - Step 3



:: Bag 6 - Step 1



:: Bag 6 - Step 2

Do not overtighten
#25225 - M3 x 3mm set screw.
You could bend the bar!

25225
M3 x 3mm
Set Screw

91823
Anti-Roll Bar,
Gray (1.3mm)

91821
Anti-Roll
Bar Collar



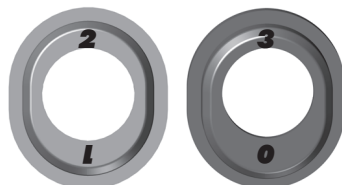
Add a drop of Diff Lube
[#6591 - not included] to
the teeth of the diff gear,
idler gear, and top shaft.

91563
10x15x4
Bearing

91792
B6.1 Diff
Height Insert



Diff Height Inserts:
The number on top
is the setting.
Stock diff height is 2.

**:: Bag 6 - Step 3**

89202
3 x 12mm
BHCS

91791
B6.1 Laydown
Gearbox Top

89203
3 x 16mm
BHCS

91709
Lay-Down
Chassis
Brace



#25225 3x3mm set
screws are used to remove
slop from the anti roll bar.
The bar should move freely.

25225
3 x 3mm
Set Screw

91819
B6.1 Shock
Pivot Ball

89203
3 x 16mm
BHCS

25188
3 x 20mm
BHCS

:: Bag 6 - Step 4

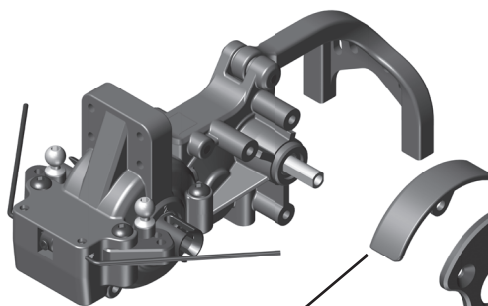
91803
B6.1 Slipper
Hub, Inner

9611
Slipper
Pad V2

91811
B6.1 Spur
Gear, 78T



There's also a
72T, 48P spur
gear [#91809]
included for
stock motor use!



91813
B6.1 Gear
Guard

91795
B6.1 Laydown
Motor Mount

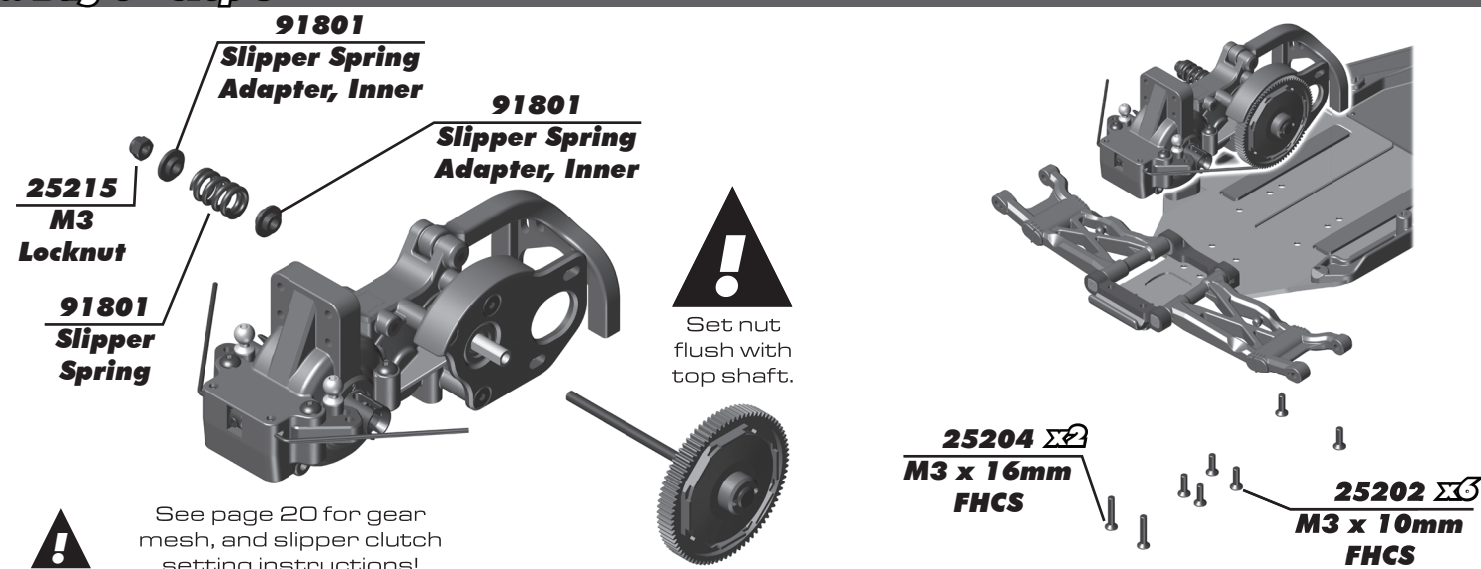
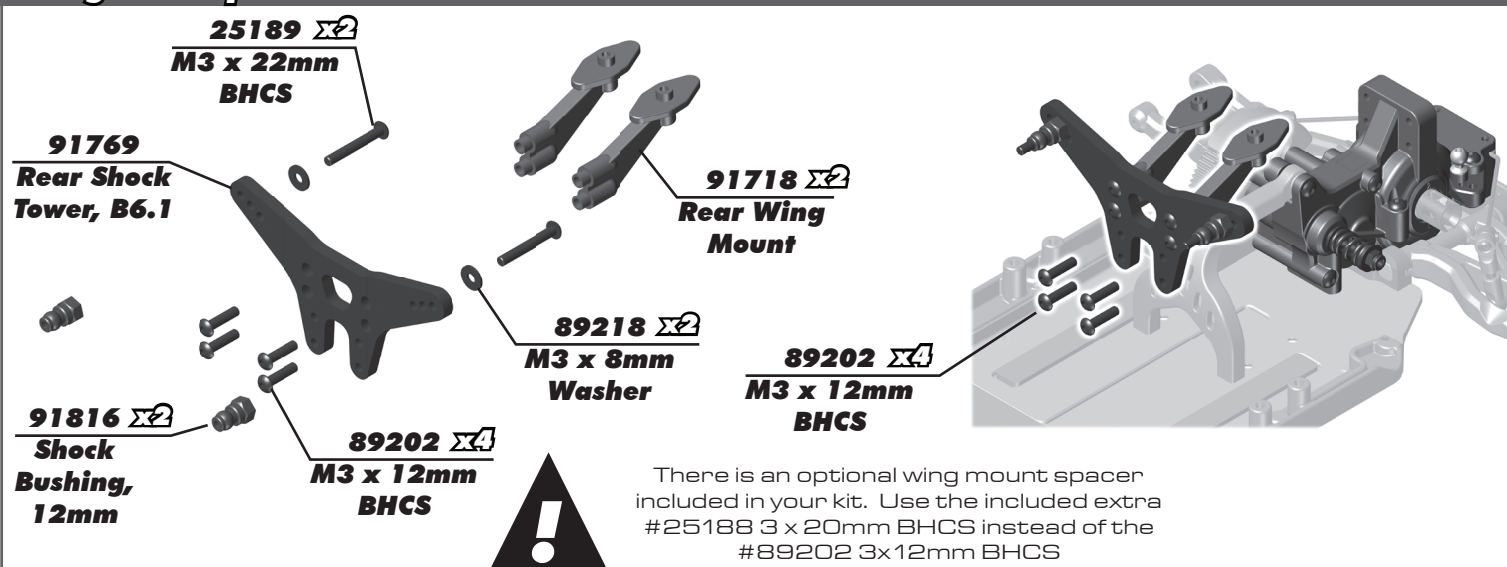
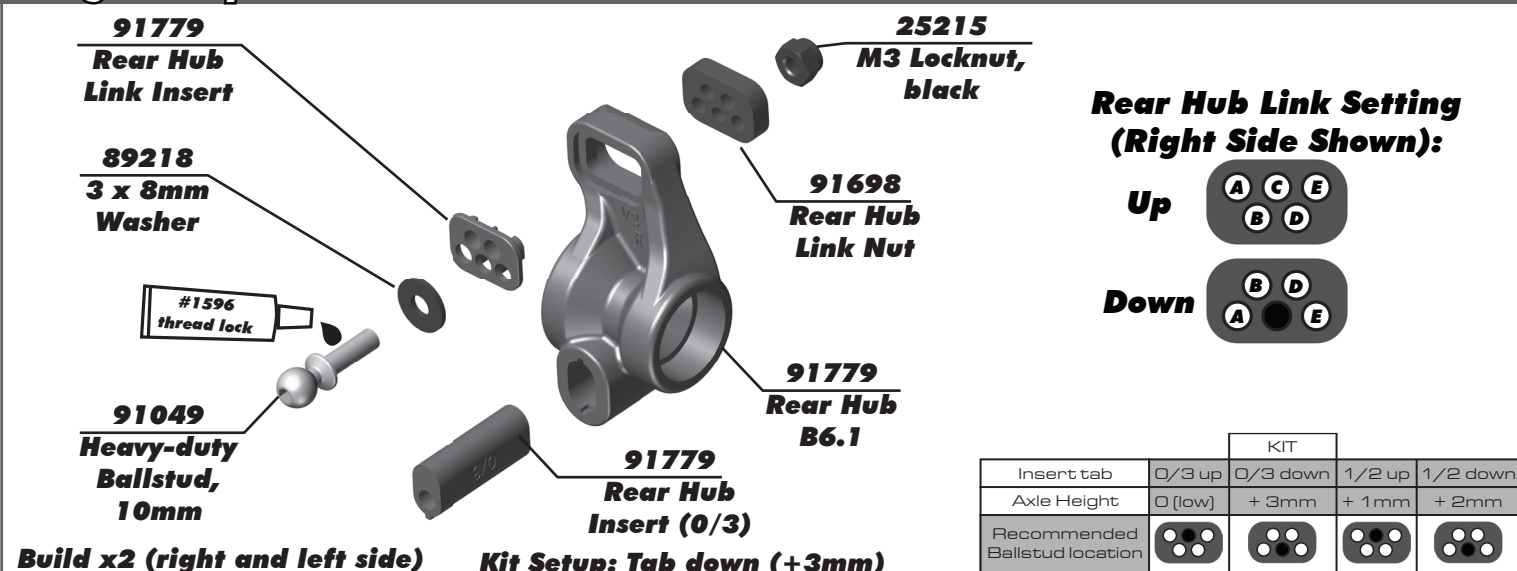
#91811 spur gear
walls should point
away from gear box.

25202
3 x 10mm
FHCS

91804
B6.1 Slipper
Hub, Outer

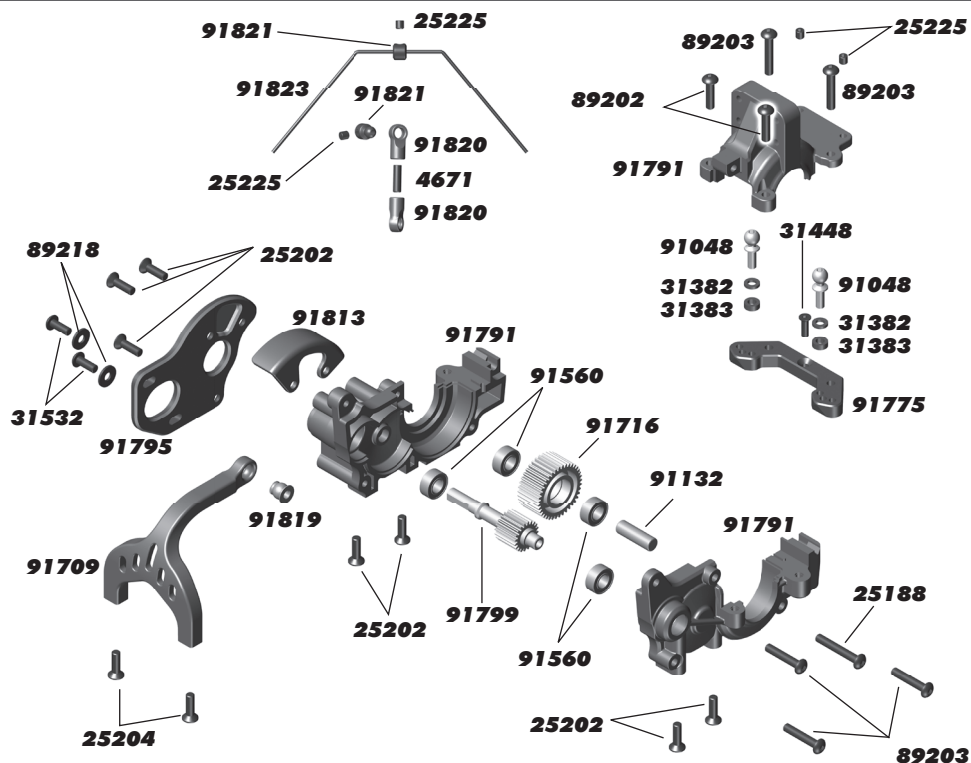
91799
B6.1 Top
Shaft Screw

91799
B6.1 Top
Shaft Pin

:: Bag 6 - Step 5**:: Bag 6 - Step 6****:: Bag 7 - Step 1**

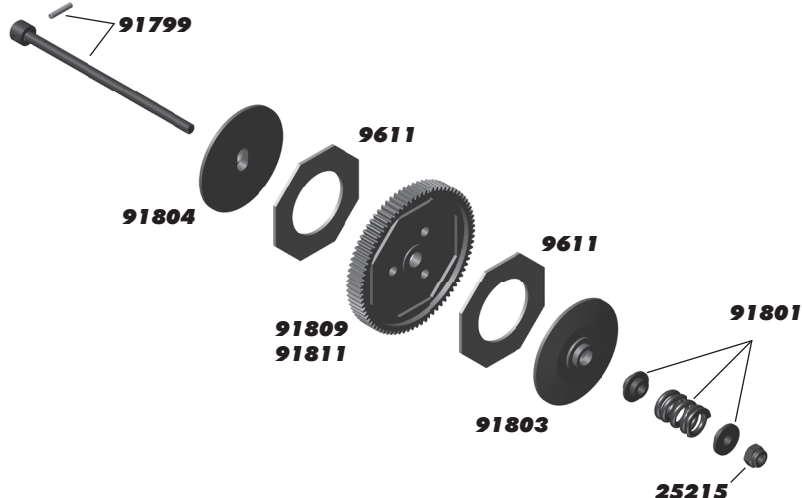
:: Transmission

4671	M3 x 10mm Set Screw	10
25188	M3 x 20mm BHCS	10
25202	M3 x 10mm FHCS	10
25204	M3 x 16mm FHCS	10
25225	M3 x 3mm Set Screw	10
31382	Ballstud Washers, 5.5x1.0 mm, blue aluminum	10
31383	Ballstud Washers, 5.5x2.0 mm, blue aluminum	10
31448	M2.5 x 8mm FHCS	10
31532	M3 x 8mm BHCS	10
89202	M3 x 12mm BHCS	10
89203	M3 x 16mm BHCS	10
89218	M3 x 8mm Washers	10
91048	Heavy-duty Ballstuds, 8 mm	10
91132	4x4 FT Idler Shafts, aluminum	2
91560	FT Bearings, 5x10x4 mm	4
91709	B6 Chassis Braces	1 ea.
91716	B6 Idler Gear, 39T, laydown	2
91775	B6.1 Rear Ballstud Mount	1
91791	B6.1 Laydown Gearbox	1
91795	B6.1 Laydown Motor Plate	1
91799	B6.1 Laydown Top Shaft	1
91813	B6.1 Gear Cover	1
91819	B6.1 Shock Pivot Balls	4
91820	B6.1 Ball Ends	1
91821	B6.1 Anti-Roll Bar Hardware	1
91823	B6.1 Rear Anti-Roll Bar Set	1



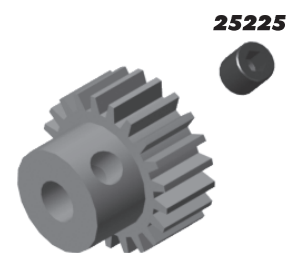
:: Slipper Clutch

9611	Slipper Pad, V2	2
25215	Locknuts, M3	10
91799	B6.1 Standup Top Shaft	1
91801	B6.1 Slipper Spring and Adaptors	1
91803	B6.1 Slipper Hub, Inner	1
91804	B6.1 Slipper Hub, Outer	1
91805	B6.1 HTC Slipper Hub Outer	1
91808	B6.1 Spur Gear, 69T - 48P	1
91809	B6.1 Spur Gear, 72T - 48P	1
91810	B6.1 Spur Gear, 75T - 48P	1
91811	B6.1 Spur Gear, 78T - 48P	1
91812	B6.1 Spur Gear, 81T - 48P	1



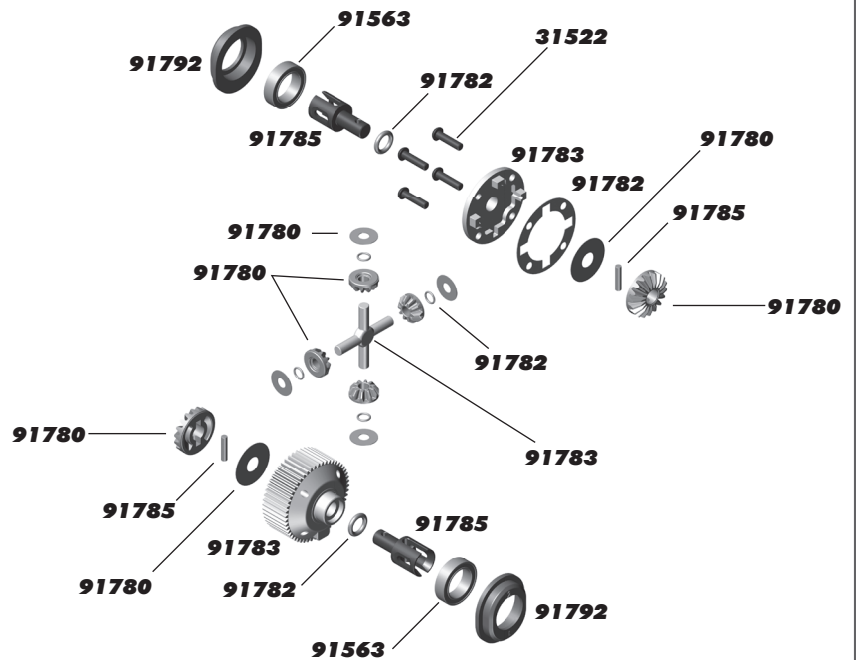
:: Pinion Gears

1335	17T 48P Aluminum Pinion Gear	1	1349	31T 48P Aluminum Pinion Gear	1
1336	18T 48P Aluminum Pinion Gear	1	1350	32T 48P Aluminum Pinion Gear	1
1337	19T 48P Aluminum Pinion Gear	1	1351	33T 48P Aluminum Pinion Gear	1
1338	20T 48P Aluminum Pinion Gear	1	1352	34T 48P Aluminum Pinion Gear	1
1339	21T 48P Aluminum Pinion Gear	1	1353	35T 48P Aluminum Pinion Gear	1
1340	22T 48P Aluminum Pinion Gear	1	25225	M3 x 3mm Set Screw	20
1341	23T 48P Aluminum Pinion Gear	1			
1342	24T 48P Aluminum Pinion Gear	1			
1343	25T 48P Aluminum Pinion Gear	1			
1344	26T 48P Aluminum Pinion Gear	1			
1345	27T 48P Aluminum Pinion Gear	1			
1346	28T 48P Aluminum Pinion Gear	1			
1347	29T 48P Aluminum Pinion Gear	1			
1348	30T 48P Aluminum Pinion Gear	1			

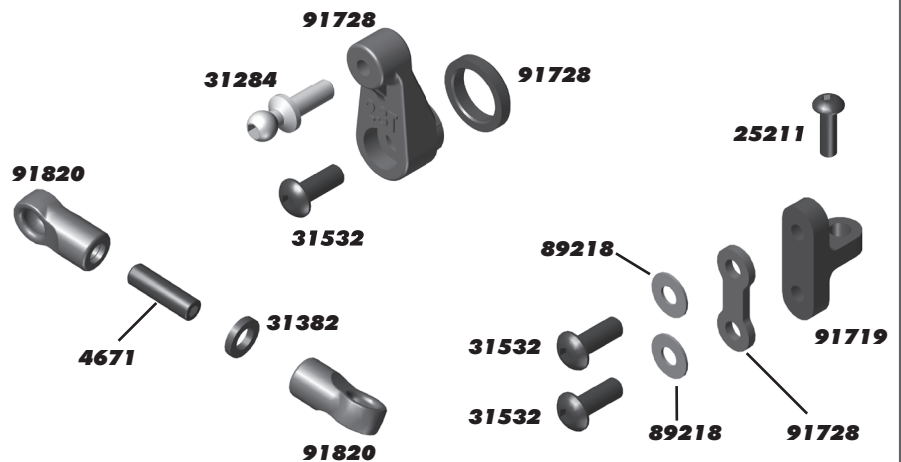


:: Gear Differential

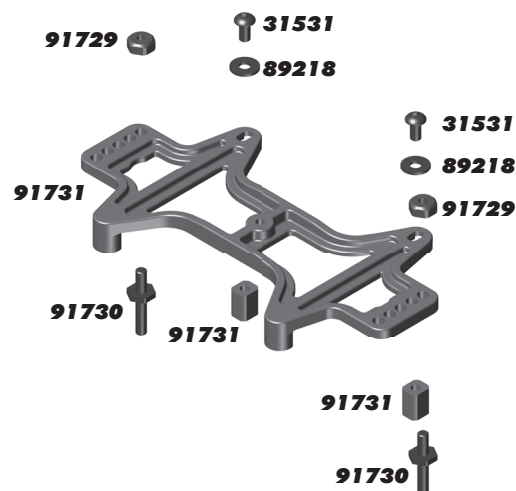
31522	M2.5 x 10mm BHCS	10
91563	FT Bearings, 10x15x4 mm	4
91780	B6.1 Gear Differential Rebuild	1
91782	B6.1 Gear Differential Seals	1
91783	B6.1 Gear Differential Case	1
91784	B6.1 Aluminum Cross Pins	2
91785	B6.1 Gear Differential Outdrives	2
91786	B6.1 Gear Differential	1
91792	B6.1 Differential Height Inserts	2 ea.
5450	Silicone Diff Fluid 1,000CST	1
5451	Silicone Diff Fluid 2,000CST	1
5452	Silicone Diff Fluid 3,000CST	1
5444	Silicone Diff Fluid 4,000CST	1
5453	Silicone Diff Fluid 5,000CST	1
5446	Silicone Diff Fluid 6,000CST	1
5454	Silicone Diff Fluid 7,000CST	1
5455	Silicone Diff Fluid 10,000CST	1
5466	Silicone Diff Fluid 15,000CST	1
5456	Silicone Diff Fluid 20,000CST	1
5457	Silicone Diff Fluid 30,000CST	1
5458	Silicone Diff Fluid 60,000CST	1
5448	Silicone Diff Fluid 80,000CST	1
5459	Silicone Diff Fluid 100,000CST	1
5461	Silicone Diff Fluid 200,000CST	1
5463	Silicone Diff Fluid 500,000CST	1
5465	Silicone Diff Fluid 1,000,000CST	1

**:: Turnbuckles and Servo Mounts**

4671	M3 x 10mm Set Screw	6
25211	M3 x 10mm BHCS	20
31284	Ball Studs Long, 8mm	6
31382	FT Ballstud Washer, aluminum 1mm	10
31532	M3 x 8mm BHCS	6
89218	M3 x 8mm Washers	10
91719	Servo Mount, B6	2
91722	Ball Cups, B6	12
91723	3 x 48mm Turnbuckle	2
91728	B6 Servo Horns, 15.5 mm	1
91820	B6.1 Ball Ends	1

**:: Battery Strap**

31531	M3 x 6mm BHCS	20
89218	3 x 8mm Washers	10
91729	Thumb Screw, B6	2
91730	Battery Strap Shoulder Screw	2
91731	Battery Strap, B6	1



:: Notes**:: Contact Information**

**Check out the following web sites for all of our electric kits, current products,
new releases, setup help, tips, and racing info!**

**Associated Electrics, Inc.
26021 Commercentre Drive
Lake Forest, CA 92630-8853 USA
<http://www.TeamAssociated.com>
<http://www.RC10.com>
http://twitter/Team_Associated
<http://www.instagram.com/teamassociatedrc/>
<http://www.facebook.com/TeamAssociated/>**

**call: (949) 544-7500
fax: (949) 544-7501**