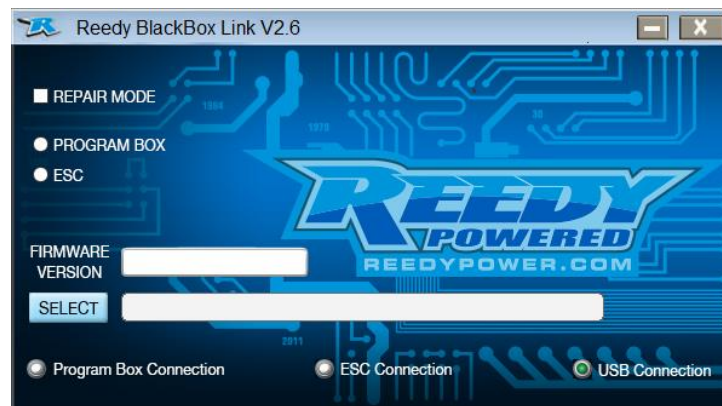


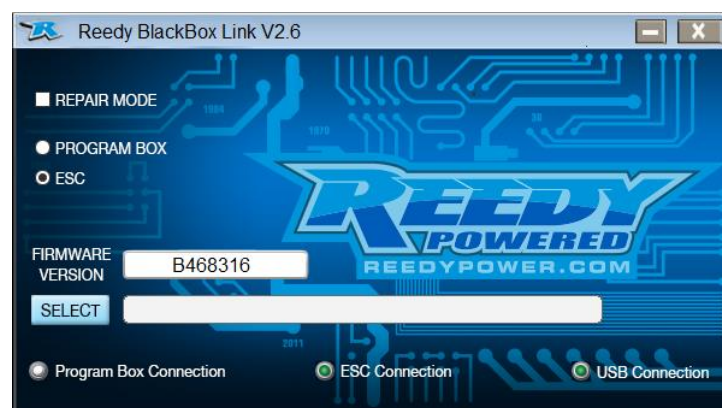
Blackbox ESC Update

To update your Blackbox ESC to the latest firmware version, or a firmware version that suits your specific application, follow the steps below. NOTE: To update your ESC using Blackbox Link 2.6, you must first install Programmer version EE460140.

1. Download and save update the file that you wish to install.
2. Open the Blackbox Link 2.6 program.
3. Plug a USB to mini-USB cable into an available USB port on your PC and into your Programmer2's USB port. The connection will be verified by a "USB Connection" green light.



4. Plug the Programmer2 connection wire into the programming port on your ESC, select ESC from the Blackbox Link menu, then power on the ESC using the power button. A successful connection will be verified by a "ESC Connection" green light.



5. Click "Select" to choose the desired file. Click "open" and the file will automatically install.
6. The newly installed firmware file number will now appear in the "Firmware Version" window and signals that the process is complete.
7. Unplug the connection wire from the ESC and disconnect the mini-USB connector from the Programmer2.
8. Your ESC is now updated and ready to use.

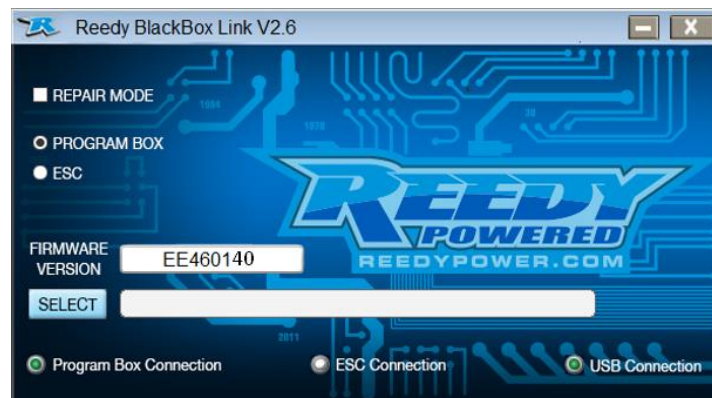
Programmer2 Update

Your Programmer2 requires the installation of EE460140 before updating ESC firmware using the Blackbox Link 2.6, and for programming the Blackbox 610R. This Programmer update also allows the Programmer2 to be used universally to program all current Blackbox ESC and their available updates.

1. Download and save update file EE460140.
2. Open the Blackbox Link 2.6 program.
3. Plug a USB to mini-USB cable into an available USB port on your PC and into your Programmer2's USB port. The connection will be verified by a "USB Connection" green light.



4. Select "Program Box" to update the Programmer2, verified by a "Program Box Connection" green light.



5. Click "Select" to choose the EE460140 file. Click "open" and the file will automatically install.
6. The newly installed firmware file number will now appear in the "Firmware Version" window and signals that the process is complete.
7. Disconnect the mini-USB connector from the Programmer2.
8. Your Programmer2 is now updated and ready to use with your 610R and all current Blackbox ESCs that support the Programmer2 programming option.