

#3960 TC3 FRONT OR REAR ANTI-ROLL BAR KIT

WHAT ARE ANTI-ROLL BARS?

Anti-roll bars (also known as sway bars) are used to stabilize a car from excessive chassis roll (which occurs when your car leans through the turns by centrifugal force). Anti-roll bars are generally used on smooth, high traction track conditions. If the conditions are very bumpy, then anti-roll bars are probably not necessary.

This kit supplies enough parts for one anti-roll bar setup. It can be used for the front or rear.

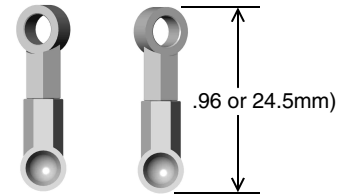
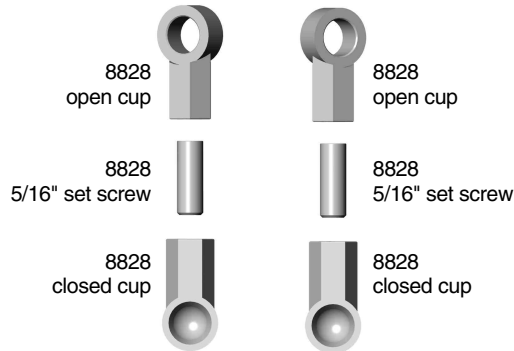
WHEN ARE ANTI-ROLL BARS NEEDED?

If you are driving on a high traction surface and your car wants to oversteer, then use the bar on the front only. This will decrease the front chassis roll and decrease steering through the corner. This has the feeling of increasing rear traction.

If your car is understeering, then try the anti-roll bar kit on the rear only. The rear anti-roll bar will decrease rear chassis roll and decrease rear traction. This has the feeling of increasing steering.

Step 1

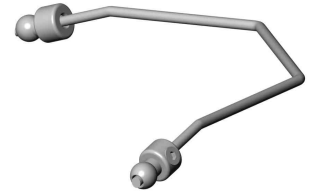
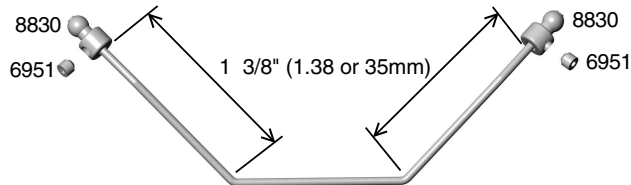
Thread one #8828 open cup and one closed cup onto each 5/16" set screw. Do your best to thread them on equally until they stop against each other. **NOTE:** With the composite CVD bones you will need to make the roll bar link a little longer to clear the CVD bone.



Parts shown actual size

Step 2

Place the aluminum #8830 anti-roll bar pivots over the ends of the anti-roll bar according to the dimension shown, and tighten down with the #6951 set screw.



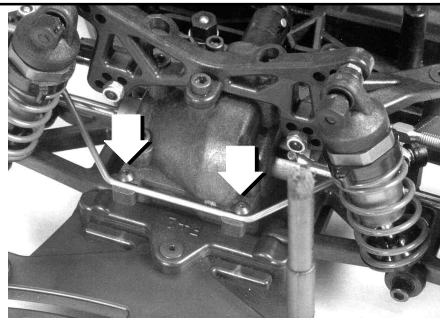
Bar shown right side up

Step 3

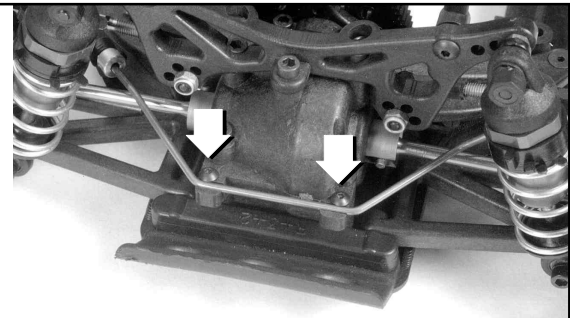
Place the anti-roll bar into the grooves of the lower transmission case and secure using two #9146 2-56 x 3/16" screws. Do not overtighten; the roll bar should move up and down freely.



9146



Front



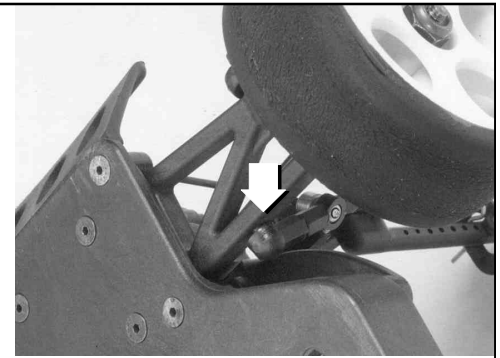
Rear

Step 4

1. Attach the open cup side of the linkages to the antiroll bar.
2. Make sure your car is ready to run without the body installed.
3. Drop your car from about 2" high onto a flat surface.
4. Without moving the suspension, adjust the link so it aligns with the balls exactly, then snap it onto the balls with your needle nose pliers. This ensures that the anti-roll bar is not under tension when your vehicle is at ride height.

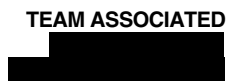


Front



Rear

TEAM ASSOCIATED



web site: <http://www.teamassociated.com>