

## :: RC8T4 T4e Manual - Page 5 - Step 2



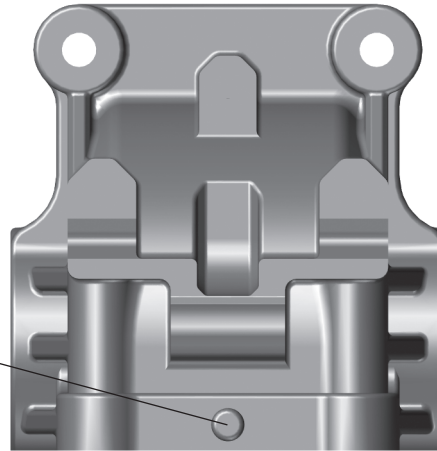
**81625**  
**Diff Ring**  
**Gear, 40T**  
**NEW PART!**



There is an updated version of the gearbox.

It is indicated by the bump on the middle of the cap as shown here.

Do not run the older cap.



### Step 1:

Add shims on the ring gear side to TIGHTEN gear mesh. Subtract shims on this side to LOOSEN gear mesh.

### NOTE:

Start 1x Thick 0.2mm

### Step 2:

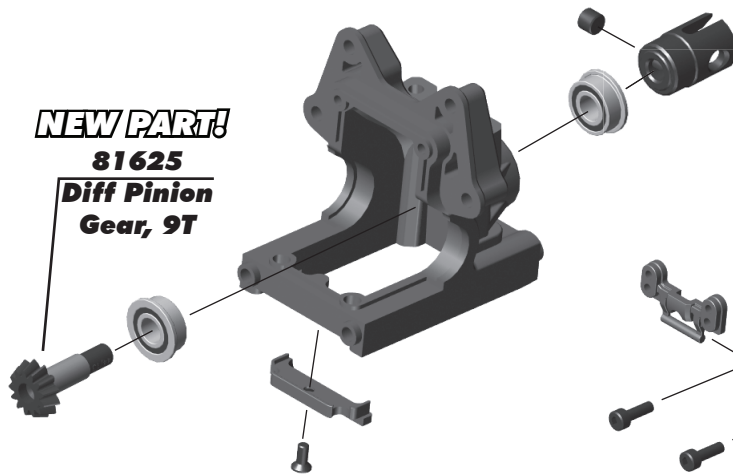
Add or subtract shims here to finalize diff side to side play once gear mesh is set from Step 1.

Recommended diff "side-to-side" clearance (gearbox assembly) 0.10 - 0.25mm. Start with 1 x 0.1mm.

### Note:

0.1 mm shim can be used for fine tuning of gear mesh

## :: RC8T4 T4e Manual - Page 11 - Steps 1, 2



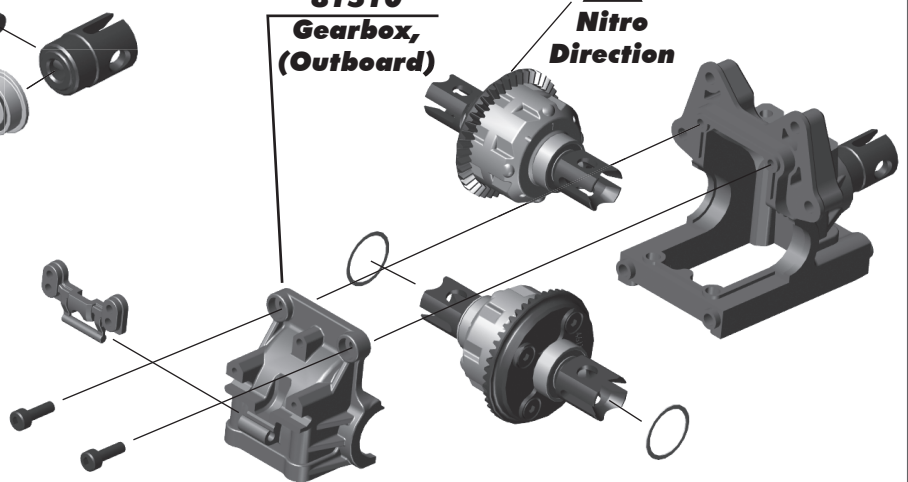
**NEW PART!**  
**81625**  
**Diff Pinion**  
**Gear, 9T**

### NEW UPDATED PART!

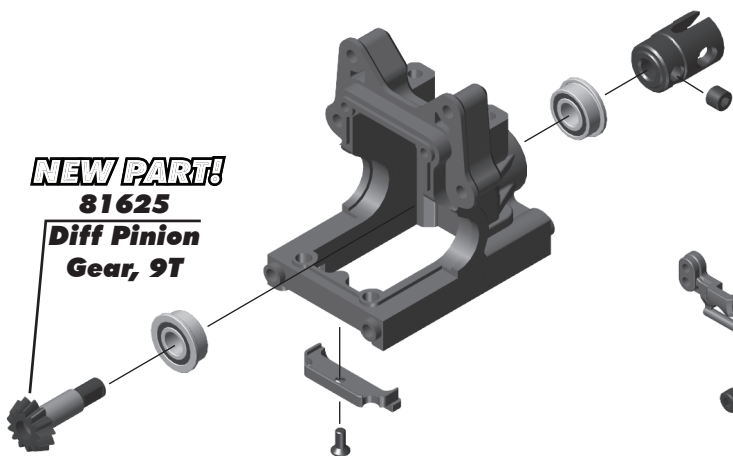
**81510**  
**Gearbox,**  
**(Outboard)**



**Nitro**  
**Direction**



## :: RC8T4 T4e Manual - Page 16 - Steps 1, 2



**NEW PART!**  
**81625**  
**Diff Pinion**  
**Gear, 9T**

### NEW UPDATED PART!

**81543**  
**Gearbox,**  
**(Outboard)**



**Nitro**  
**Direction**

