

For Immediate Release: July 27, 2023

#80945RWB RC8B4 Team Kit with RWB Chassis



NITRO ▪ OFF ROAD ▪ 1:8 SCALE ▪ 4 WHEEL DRIVE ▪ KIT

MADE FOR RACERS WHO WANT TO PUSH THE CAR TO THE LIMIT.

This updated RC8B4 kit substitutes the RC8B4 kit chassis with the #81589 FT RWB Chassis and necessary center dogbones. It's the latest development to come from Associated Electrics' Area 51, designed to push boundaries of performance and build upon the number of accolades accumulated by the RC8 series.

SPECIFICATIONS

Scale	1:8
Power	Nitro
Length, with wing	486mm (19.13")*
Width	304.5mm (11.99")*
Weight	Varies*
Wheelbase	321.5-329mm
Final Drive Ratio	12.38:1

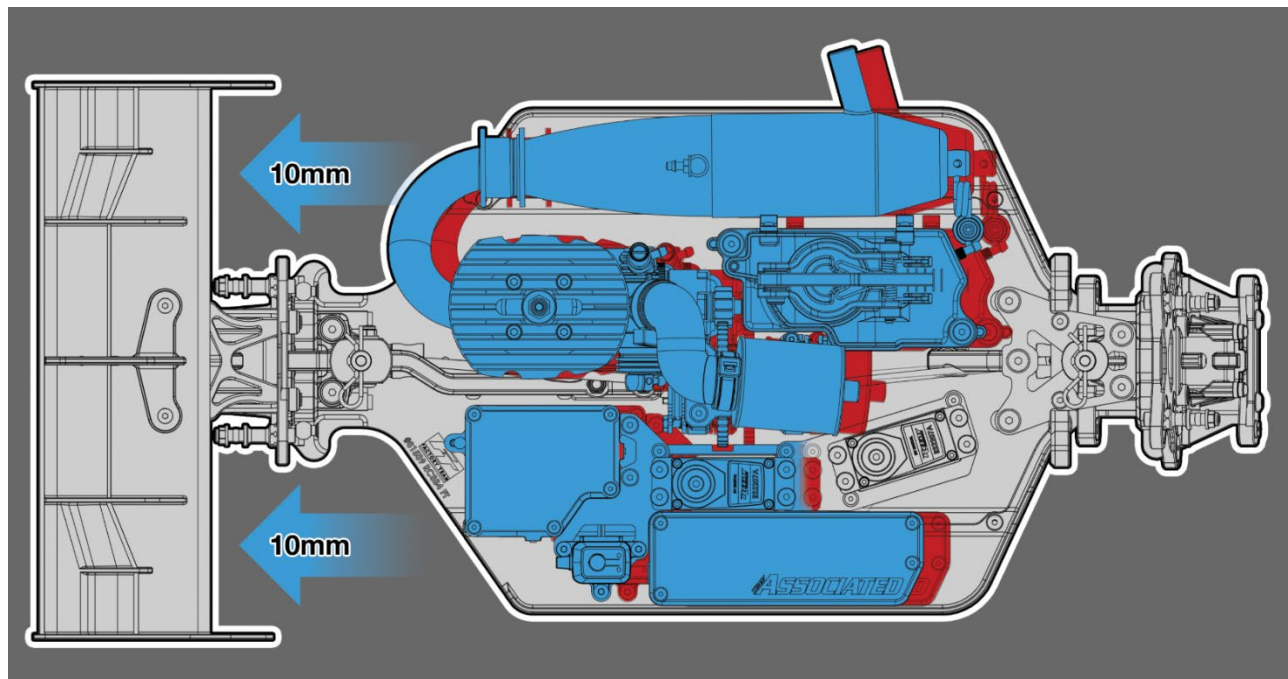
*Final width, length, and weight will vary based on electronics, nitro engine, tire configuration, wing position, and vehicle setup.

ITEMS NEEDED TO COMPLETE

- 1:8 scale nitro motor (.21 class rear exhaust engine)
- Exhaust system: muffler and header joining pack or muffler spring
- 4.8V-7.6V receiver battery
- Battery charger (suited for one of the batteries mentioned above)
- 2-channel surface transmitter, 2-channel receiver, and steering servo
- Lexan® specific spray paint for body
- 1:8 scale off-road wheels and tires

Other helpful items: Silicone Shock Fluid. Silicone Diff Fluid. Body Scissors (#1737). Reamer (#1499). FT Wrench Set (#1519). 5mm hex driver (#1506). Hobby Knife. Needle Nose Pliers. Wire Cutters. Soldering Iron. Calipers or a Precision Ruler.

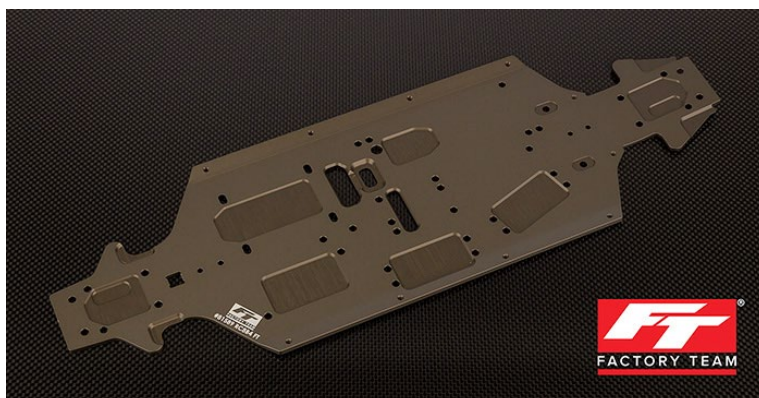
RWB = Rear Weight Bias. Major components are shifted rearward to alter the bias and reduce weight on the front tires while increasing weight on the rear tires.



The RC8B4 FT RWB Chassis began development ahead of the 2022 IFMAR World Championships and saw race-winning results with Spencer Rivkin at the 2023 TNR Challenge and Brent Thielke at the 2023 Dirt Nitro Challenge, along with A-Main performances from other team drivers during this time.

RC8B4 with RWB Chassis features:

- Durable CNC machined 3mm 7075 aluminum with hard anodized finish and laser etching.
- RWB = Rear Weight Bias. Shifts engine, tank, center differential, and radio tray rearward 10mm.
- Increases rear grip in low traction.
- Improves predictability on rough track conditions.
- Increases rear chassis stiffness.
- Installation supplement included.



RC8B4RWB TEAM KIT FEATURES

- **NEW!** RWB = Rear Weight Bias. Chassis shifts engine, tank, center differential, and radio tray rearward 10mm
- Includes #81580 RC8B4e Center Dogbone, 93.5mm and #81581 RC8B4e Center Dogbone, 104mm.

Legacy RC8B4 features:

- Innovative front-end geometry with reduced inclined kingpin steering blocks are paired with a new wider upper suspension arm pivot for improved steering balance and predictable handling in all conditions
- New gearboxes are specific to front and rear with larger 6x13x5 mm flanged bearing sizes resulting in longer life of ring and pinion gears. The front gearbox has an inclined pinion gear angle to straighten the center driveshaft for increased drivetrain efficiency and reduced phasing and vibration while the rear gearbox remains flat.
- Front and rear suspension arms engineered to accommodate a wide range of flex and stiffnesses
- One-piece anti-roll bar links mounted in-line with anti-roll bar with BHC for simplified assembly
- Front upper arms include a unique molded "wing" insert for increased front-end downforce
- New rear wing mount has adjustable wing angle shims, significant strength improvements, an aerodynamic shape, and extra clearance for shock position adjustment
- The adjustable rear wing has more vertical fins for increased straight-line stability, a taller rear wicker lip height for increased downforce and increased strength in various areas to reduce bending fatigue
- New rear chassis brace is mounted centrally to the gearbox, which reduces material fatigue, centralizes shear forces, and improves the life of rear end drivetrain parts while allowing for three different chassis flex options
- New rear hub features a symmetrical left and right common design with axle height inserts for adjustable roll center tuning
- New captured CVA drive shafts design front and rear with center dogbone driveline
- Fuel tank with an ergonomically designed lid puller, quick reference fuel markings and 1-, 2-, and 3cc stackable inserts for volume adjustment at sanctioned events
- Carbon fiber front top plate centralizes the front chassis brace for balanced flex in all directions
- New body shell designed by Area 51 for aggressive looks, functional performance, and lasting durability
- V3 differentials with 42T ring and 12T pinion gears for improved gear ratios
- RC8B3.2 side guards that thread into the chassis from the top side of the car
- RC8B3.2 radio tray: battery and receiver box with removable transponder mount
- RC8B3.2 split center diff mounts with aluminum center top plate
- 16mm shocks equipped with locking spring cups and rod ends in improved material, V2 springs, 'stiff' style shock bladder, combination bleeder/emulsion caps, and blue aluminum threaded collars
- RC8B3.2 narrow C and D arm mounts
- 4-shoe aluminum clutch with two composite and two aluminum shoes, optimized clutch springs, and steel 13T clutch bell

UPC	Part No.	Description	MAP	MSRP	Available
784695983601	80945RWB	RC8B4 Team Kit with RWB Chassis	\$719.99	\$1029.99	Available now



21062 Bake Pkwy
Lake Forest CA 92630
www.AssociatedElectrics.com

