

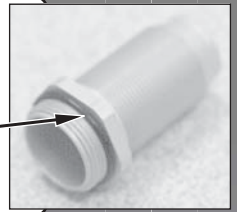
# #31123 - VCS2 Shock Upgrade Kit

Follow these steps to build (or upgrade) to the new VCS2 Shocks design.

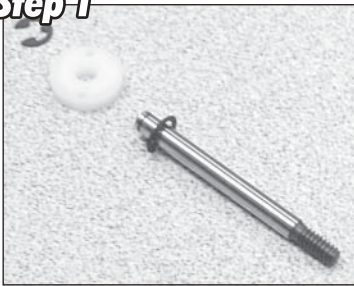
**Associated Electrics, Inc.**

## Read First!

► If you are installing the VCS2 Shock Upgrade Kit onto your existing shocks, you will need to remove all the internal parts first. You will also need to remove the black o-ring that is installed on the shock body. This is no longer needed with the new Upgrade Kit.



### Step 1



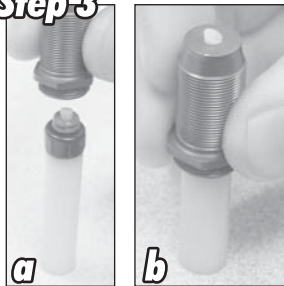
► Snap e-clip into groove on shock shaft. Install piston onto shaft, and snap second e-clip into groove on shock shaft.

### Step 2



► Slide seal retainer and 2 red o-rings onto shock building tool. Apply drop of oil to the o-rings.

### Step 3



► Insert shock 'seal' assembly into shock body (a). Press down until you see the shock building tool stick through the shock body (b).

### Step 4



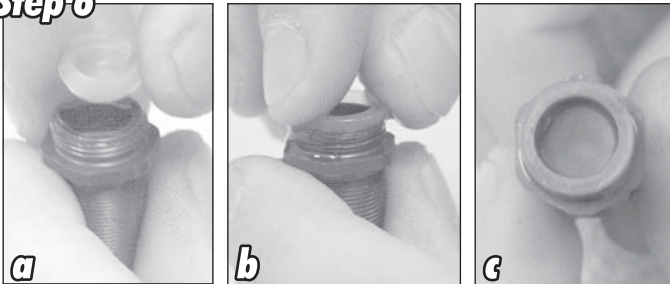
► Apply a drop of oil to the shaft threads. Insert assembled shock shaft into shock body.

### Step 5



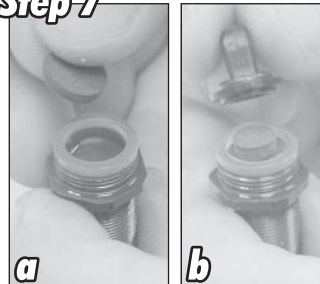
► Fill with shock oil up to the top of the shock body. Move shaft up and down to remove any air bubbles.

### Step 6



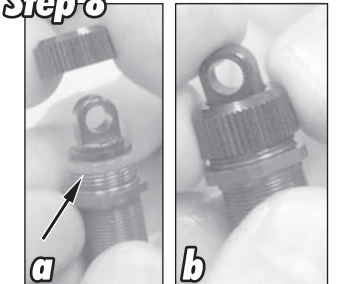
► With the shaft fully extended, place bladder onto the top of the shock body (a), displacing the extra oil (b). Make sure there are no air bubbles under the clear bladder (c). If there are, gently lift one side of the bladder to allow air bubbles to escape.

### Step 7



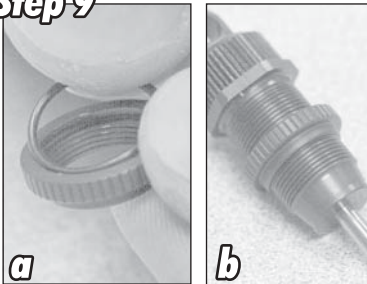
► Place the 1st stage rebound foam into the bladder (a). Place the 2nd stage rebound foam on top of the 1st stage and install the plastic cap (b).

### Step 8



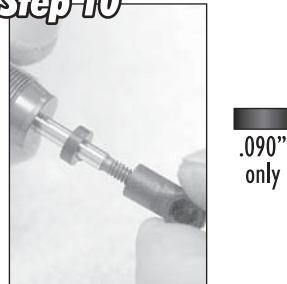
► Slide aluminum cap retainer over assembled cap. Make sure bladder is completely seated (a). While firmly holding plastic cap, tighten aluminum retainer ring (b).

### Step 9



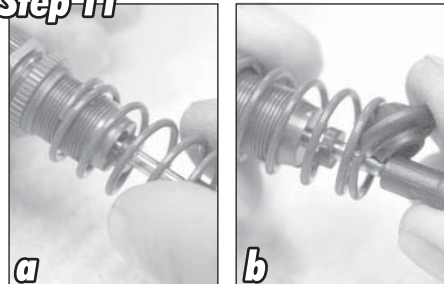
► Insert black o-ring into threaded collar (a). Assemble threaded collar onto threaded shock body (b).

### Step 10



► Slide one .090" uptravel limiter onto shock shaft. Thread on shock ballcup. **DO NOT USE ANYTHING LESS THAN .090" UPTRAVEL LIMITER!**

### Step 11



► Slide spring over threaded shock body (a). Install spring retainer onto shaft (b). Note location of the uptravel limiter!

### Step 12

► Re-install shocks. Don't forget to set the ride height on your TC before you run.