

ASSOCIATED 1:10 SCALE GT MANUAL

RC10 



INSTRUCTION MANUAL FOR THE
RC10GT GAS TRUCKS

#7060, 7061, 7067, 7068, & 7091

ASSOCIATED'S RC10GT--
3 TIMES NORRCA WORLD CUP CHAMPION!



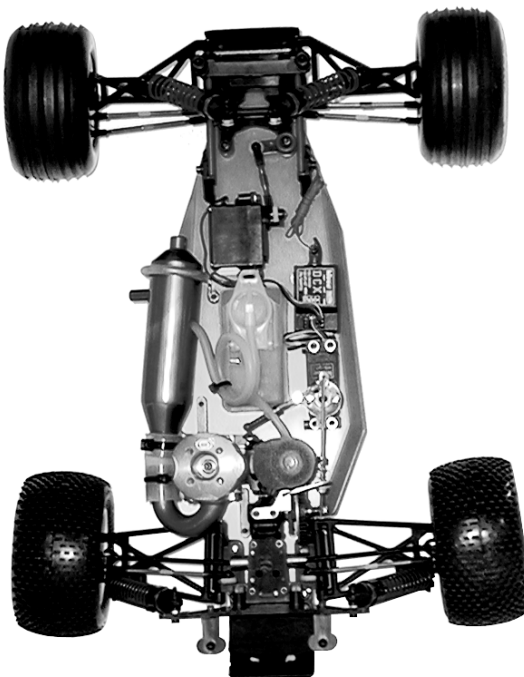
Thank you for purchasing this Team Associated product. This manual contains steps and instructions you will use to set up your gas truck. Please read this entire manual before attempting to start your gas truck. Follow the directions in this manual closely so you don't encounter any problems on start up. We hope that you will enjoy your new Team Associated gas truck kit.

RC10

FACTORY TEAM KIT

Hard anodized, Teflon-coated shocks.
MIP CVD's.
Factory Team blue titanium turnbuckles.
Pro-Line Ford F-150 racing body.
Stealth Transmission.

Also includes: New, stiffer, long wheelbase chassis.
Precision, rubber-sealed ball bearings.
Graphite front & rear shock towers.
Blue screws, blue manifold, blue tuned pipe.



TEAM GT KIT

Hard anodized, Teflon-coated shocks.
MIP CVD's.
Associated steel turnbuckles.
Pro-Line Ford F-150 racing body.
Stealth Transmission.

Also includes: New, stiffer, long wheelbase chassis.
Precision rubber-sealed ball bearings.
Tuned pipe and manifold.

GT RTR Plus

Already assembled!
Oil-filled shocks.
Associated dogbone rear axles.
Associated steel turnbuckles.
Painted truck body.
Stealth Transmission.

Also includes: .15 Associated engine and quality AM radio.
New, stiffer chassis.
Tuned pipe and manifold.

REQUIRED EQUIPMENT TO RUN YOUR KIT

for the RTR Plus #7091:

Model car fuel.
12 AA size batteries.
Small tie wraps for the air filter.

YOU WILL NEED THESE TOOLS

Small Phillips screwdriver.

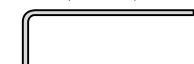
Small flat head screwdriver.

5/16" driver or glow plug wrench.

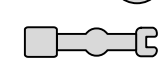
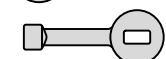


TOOLS SUPPLIED

Allen wrenches, .050",
1/16", 3/32", 5/64".



Molded tools (#6956):



for the pull start version of Factory Team kit #7061 Team Kit #7067:

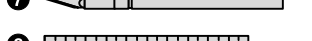
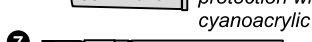
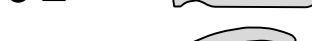
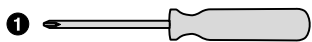
Glow plug starter.
Model car fuel.
Fuel bottle.
Receiver battery pack.
Glow plugs (AE #MC-59).
R/C two channel surface frequency radio system with two servos.
.12 c.i. glow fuel R/C engine.

YOU WILL NEED THESE TOOLS TO ASSEMBLE YOUR KIT

- 1 Phillips screwdriver #2.
- 2 1/8" flat head screwdriver.
- 3 5/16" driver or glow plug wrench.
- 4 Needlenose pliers.
- 5 Thread locking compound (#242)
- 6 Blue Loctite® or equivalent Super glue (cyanoacrylic glue).
- 7 Hobby knife **WARNING!** This knife cuts plastic and fingers with equal ease, so be careful.
- 8 Precision ruler.

for the non pull start version of Factory Team kit #7060 Team Kit #7068:

Glow plug starter.
Model car fuel.
Fuel bottle.
Receiver battery pack.
Glow plugs (AE #MC-59).
Starter box or electric hand starter with car starter donut
12 volt battery for starter system.
R/C two channel surface frequency radio system with two servos.
.12 c.i. glow fuel R/C engine.

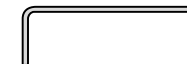


WARNING!

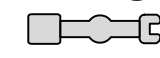
Do not use a power screwdriver to install screws into nylon, plastic, or composite materials. The fast rotation speed can heat up the screws being installed. They can then break the molded parts or strip the threads during installation.

TOOLS SUPPLIED

Allen wrenches, .050",
1/16", 3/32", 5/64".



Molded tools (#6956):



WARNING! Always use hand and eye protection with cyanoacrylic glue!

CUSTOMER SUPPORT

(714) 850-9342
FAX (714) 850-1744
web site: <http://www.rc10.com>



ASSOCIATED ELECTRICS, INC.

3585 Cadillac Ave.
Costa Mesa, CA 92626-1401
USA
©2002 Associated Electrics, Inc.

READ THIS BEFORE BUILDING

READ THE MANUAL!

This manual is for three different GT kits and will help you assemble and set up each one. Read the manual before starting your kit and before contacting us for help. *"Hello, Associated, I need some help."* *"Did you read the manual?"*

OPEN THE BAGS IN ORDER

The assembly is arranged so that you will open and finish that bag before you go on to the next bag. **Sometimes you will have parts remaining at the end of a bag. These will become part of the next bag.** Some bags may have a large amount of small parts. To make it easier to find the parts, we recommend using a partitioned paper plate for spreading out the parts so they will be easier to find.

SUPPLEMENTAL SHEETS

We are constantly updating parts to improve our kits. These changes, if any, will be noted in supplementary sheets located in a parts bag or inside the kit box. Check the kit box before you start and each bag as it is opened. When a supplement is found, attach it to the appropriate section of

MANUAL FORMAT

The following explains the format of these instructions.

The beginning of each section indicates:

- 1 Which bag to open ("**BAG A**") and which steps you'll be using those parts for ("**FOR STEPS 1-3**").
- 2 Which parts you will use for those steps. Remove only the parts shown. "**1:1**" indicates an actual size drawing; place your part on top and compare it so it does not get confused with a similar part.
- 3 Which tools you should have handy for that section.
- 4 An asterisk (*****) next to a part number indicates the part used in the Factory Team kits *7060 & 7067. (You can use those numbers to upgrade your Team kit and RTR.)
- 5 The instructions in each step are ordered in the order you complete them, so read the words AND follow the pictures. The numbers in circles are also in the drawing to help you locate them faster.
- 6 When we refer to left and right sides of the truck, we are referring to the driver's point of view inside the car.

To further clarify the manual, we have used the following designations:

RTR+ = Part or step is unique to #7091 Ready To Run.

TEAM BUILT = Part or step unique to the Team Built trucks.

TEAM/FT = Part or step is unique to Team and Factory Team kits

BAG A

REMOVE THESE
PARTS FOR:
Step 1



7531, qty 1
small flanged
bushing



7531, qty 1
large flanged
bushing



9158, 9156B*, qty 1
servo saver tube



9158, 9156B*, qty 1
servo saver
adjusting nut



9158, qty 1
servo saver
spring



7531, qty 1
servo saver arm



7531, qty 1
servo saver arm

step 1

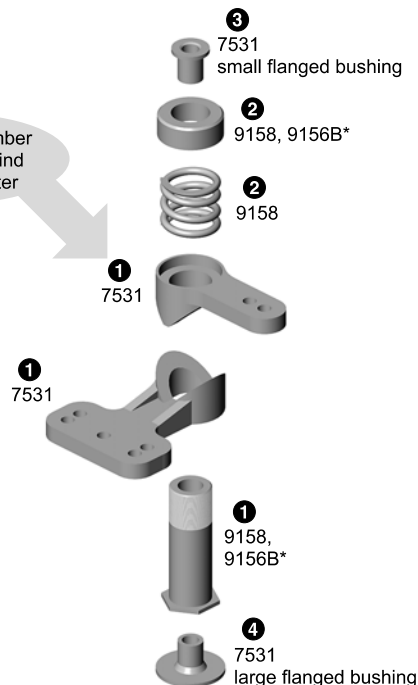
SERVO SAVER ASSEMBLY

- 1 Slide the two #7531 saver arms onto the #9158 tube. Orient the servo arm as shown.
- 2 Slide the #9157 spring and the #9158 (9156*) adjusting nut on the tube. Tighten the nut until it is even with the top.
- 3 Push the #7531 small flanged bushing into the top of the #9158 (9156*) tube.
- 4 Push the #7531 large flanged bushing into the bottom of the #9158 (9156*) tube.

* Asterisk denotes Factory Team part number. Use this part number if you have the Factory Team kit #7060 or #7067.

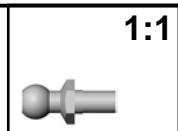
Also use this part number if you wish to upgrade your Team kit, Team Built, or RTR truck with titanium, graphite or lightweight aluminum parts.

Match this number
to the text to find
your way faster



BAG A

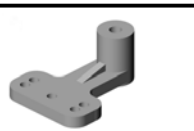
REMOVE THESE PARTS FOR:
Steps 2-4



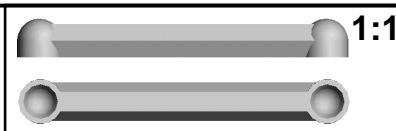
6270, qty 5
short ball end



6272, qty 5
ball end dust cover



7531, qty 1
servo saver bellcrank



6265, qty 1
drag link



7306, qty 1
long servo saver screw



7306, qty 1
short servo saver screw

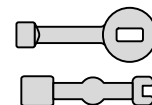


6222, qty 2
nylon locknut



8182, qty 2
plain nut

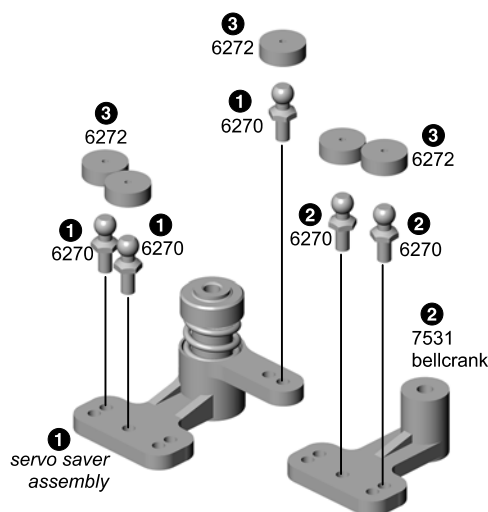
TOOLS USED



step 2

SERVO SAVER ASSEMBLY

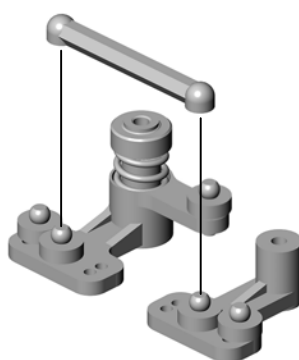
- 1 Install the three #6270 short ball ends into the servo saver arms as shown.
- 2 Install the two #6270 short ball ends into the #7531 bellcrank as shown.
- 3 Add the #6272 foam dust covers to the ball ends.



step 3

SERVO SAVER ASSEMBLY

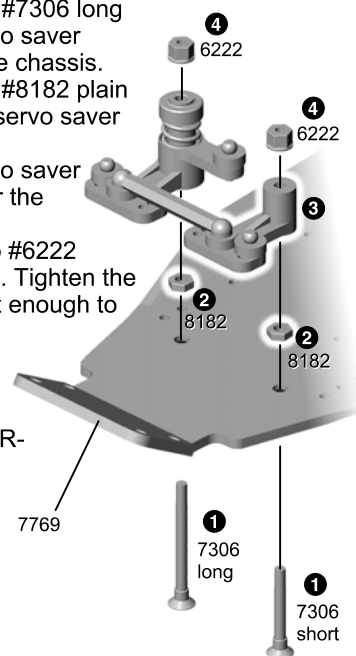
Snap the #6265 drag link onto the two inner ball ends.



step 4

SERVO SAVER INSTALLATION

- 1 Install the two #7306 long and short servo saver screws into the chassis.
- 2 Install the two #8182 plain nuts onto the servo saver screws.
- 3 Place the servo saver assembly over the two screws.
- 4 Thread on two #6222 nylon locknuts. Tighten the nuts down just enough to remove any play up and down in the assembly, but DO NOT OVER-TIGHTEN.



BAG B

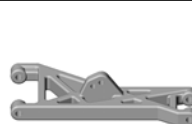
REMOVE THESE PARTS FOR:
Steps 1-6



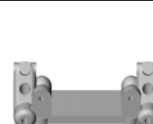
6299, qty 4
e-clip



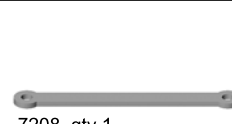
7209, qty 2
front inner hinge pin



7206, qty 2
left and right front a-arms

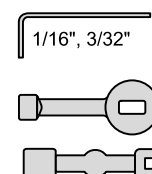


7207, qty 1
front bulkhead

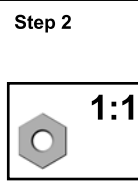


7208, qty 1
aluminum bulkhead support

TOOLS USED



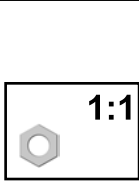
7215, 7216*, qty 1
front shock tower



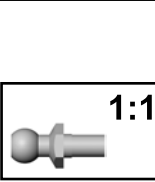
6295, qty 2
plain nut



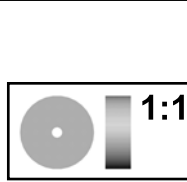
6936, qty 2
#4 flat washer



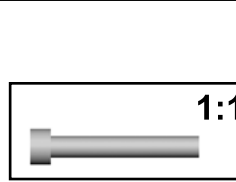
7260, qty 2
plain nut



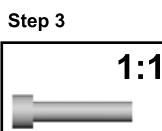
6270, qty 2
short ball end



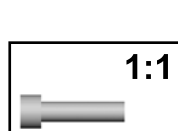
6272, qty 2
ball end dust cover



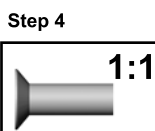
6927, qty 2
4-40 x 3/4 SHCScrew



6925, qty 2
4-40 x 1/2 SHCScrew



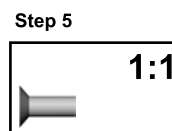
7838*, qty 2
4-40 x 7/16 SHCScrew



6280, 6942*, qty 4
8-32 x 1/2 FHScrew



7774, qty 1
front bumper



7673, qty 4
4-40 x 5/16 FHScrew

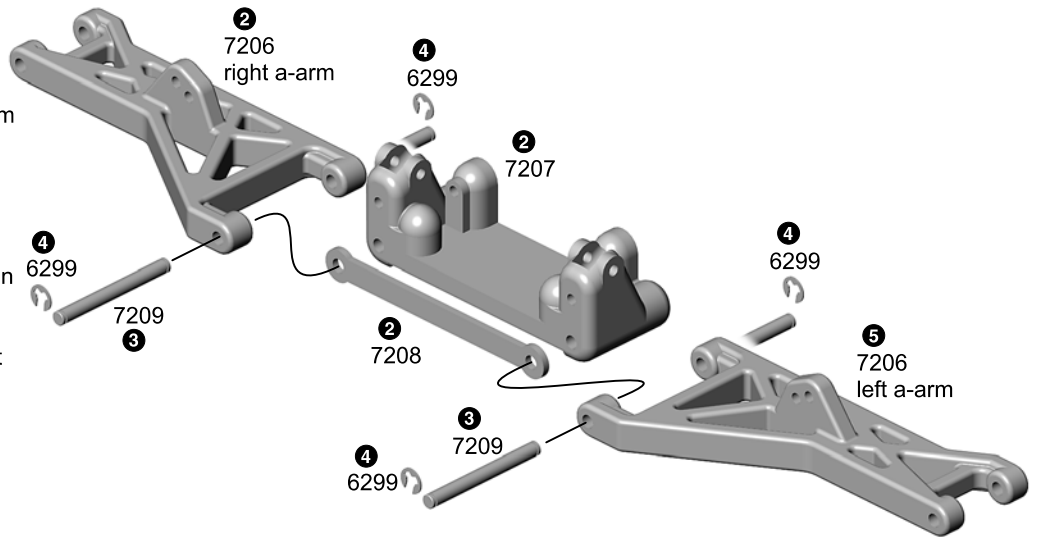


7314, qty 2
nose tube mount
(left and right)

step 1

FRONT ARM ASSEMBLY

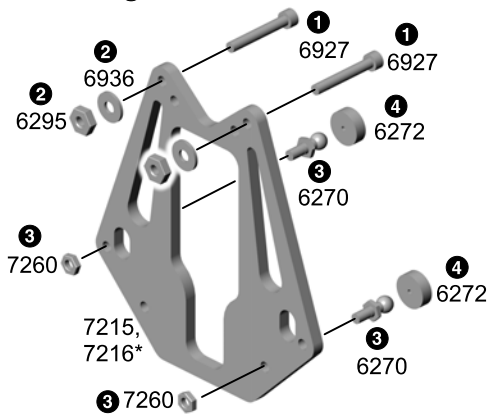
- 1 Twist the #7206 front suspension arms from the mold runners with your pliers. Trim away any remaining molding with your hobby knife.
- 2 Align the left #7206 front a-arm with the #7207 front bulkhead. Now line up the #7208 aluminum bulkhead support between the front side of the bulkhead and the a-arm.
- 3 Slide the #7209 hinge pin through the front a-arm, arm support and bulkhead.
- 4 Add the two #6299 E-clips to the #7209 hinge pin.
- 5 Repeat steps 2-4 for the right side.



step 2

FRONT SHOCK TOWER

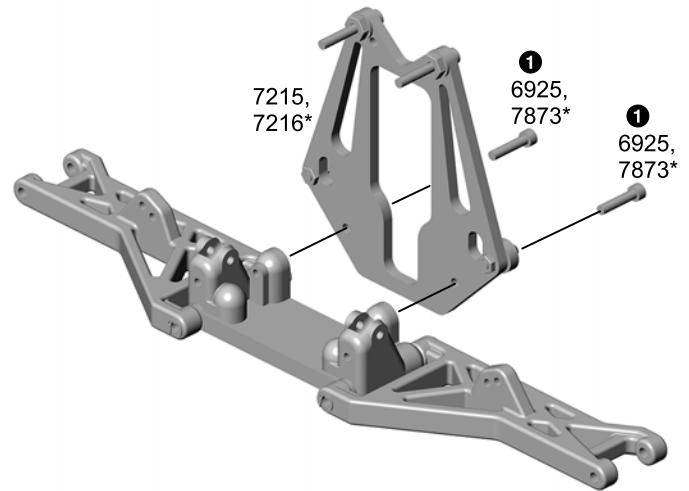
- 1 Install the two #6927 screws through the outer holes on the #7215 (7216*) front shock tower.
- 2 Slide two #6936 washers onto the screws. Then thread on the #6295 large plain nuts.
- 3 Attach the #6270 ball end and #7260 small plain nuts through the hole as shown.
- 4 Add #6272 foam dust covers to the ball ends.



step 3

ATTACH FRONT SHOCK TOWER

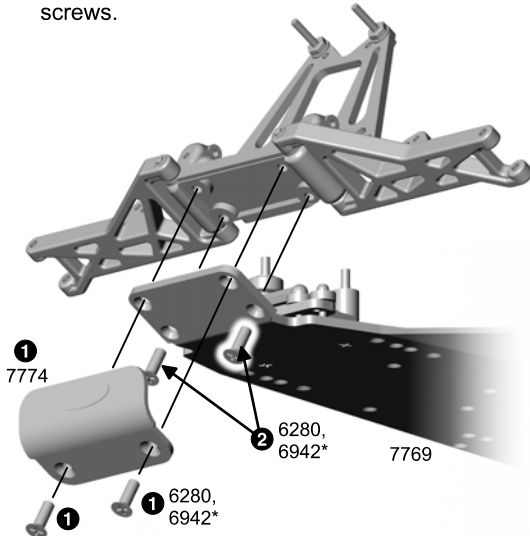
- 1 Attach the #7215 (7216*) front shock tower assembly to the front bulkhead with two #6925 (7873*) screws.



step 4

ATTACH FRONT ASSEMBLY

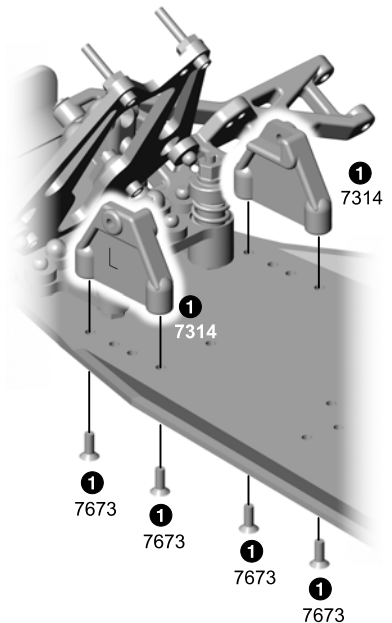
- 1 Attach the front end assembly to the 7769 chassis with two #6280 (6942*) screws.
- 2 Attach the front bumper with two #6280 (6942*) screws.



step 5

NOSE TUBE MOUNTS

- 1 Attach the #7314 nose tube mounts with four #7673 screws, the one marked "L" on the left and "R" on the right.



BAG B

REMOVE THESE
PARTS FOR:
Step 6



1:1

7874, 7873*, qty 2
4-40 x 7/16 screw



1:1

6932, 6933*, qty 2
4-40 x 5/16 screw



7315, qty 2
blue nose brace tube

TOOLS USED

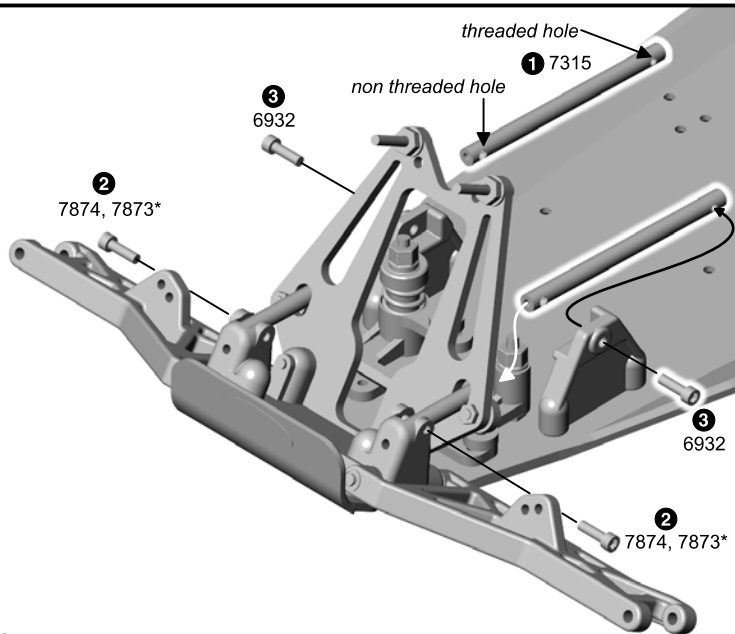
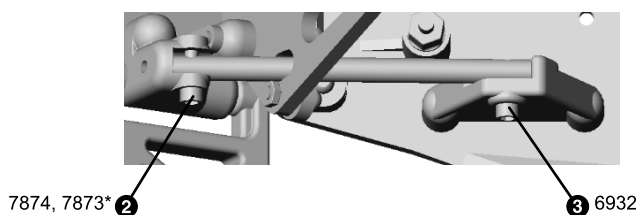
3/32"

step 6

NOSE BRACE TUBES

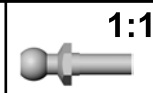
- 1 The #7315 nose tube has threaded holes and non-threaded holes through its sides. Slide the #7315 front nose tube's unthreaded hole end through the front shock tower's oval shaped holes.
- 2 Install one #7874 (7873*) screw through the bulkhead and through the nose tube, but do not tighten it down all the way.
- 3 Line up the back hole in the nose tube to the nose tube mount. Install one #6932 screw from the outside as shown. Now tighten down the front screws.

ASSEMBLED



BAG C

REMOVE THESE
PARTS FOR:
Steps 1-2



1:1

6273, qty 4
long ball end



1:1

6936, qty 4
#4 washer



6221, qty 2
steering block arm
(left arm shown)



1:1

7260, qty 4
small plain nut



6220, 6220B*, qty 2
front axle



6210, qty 2
steering (caster) block
(left block shown)



1:1

6223, qty 2
kingpin



1:1

6299, qty 8
E-clip



1:1

6272, qty 4
ball end dust cover



1:1

6227, qty 2
front outer hinge pin



1:1

6951, qty 2
4-40 x 1/8" set screw

TOOLS USED

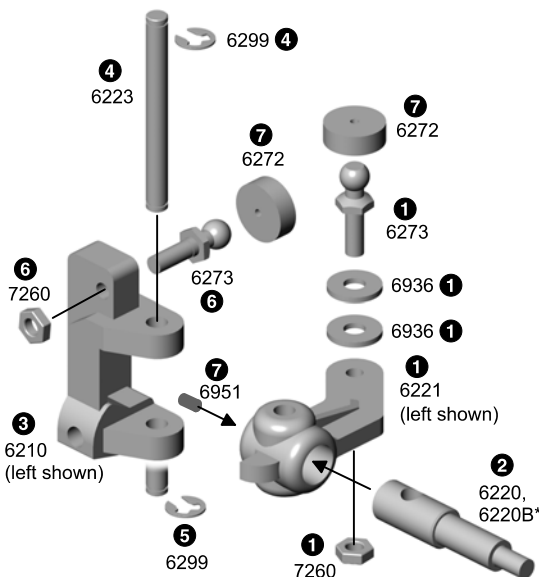


step 1

STEERING (CASTER) BLOCK ASSEMBLY

- 1 Attach the #6273 ball end to the #6221 steering block with two #6936 washers. Thread a #7260 plain nut on the opposite side.

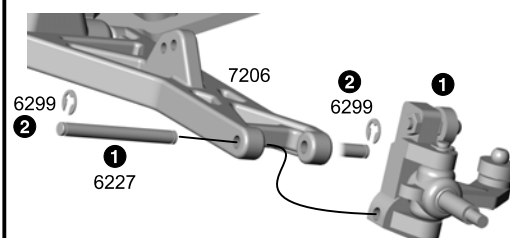
- 2 Push the #6220 (6220B*) axle into the #6221 steering block, lining up the holes.
- 3 Now locate the left #6210 caster block and align the holes of the steering block assembly and caster block.
- 4 Add a #6299 E-clip to one end of the #6223 kingpin and insert it through both blocks.
- 5 Add a #6299 E-clip to the other side of the #6223 kingpin.
- 6 Attach the #6273 ball end to the caster block as shown. Thread one #7260 plain nut on the opposite side.
- 7 Add #6272 foam dust covers to the ball ends. Tighten the #6951 set screw against the kingpin.
- 8 Now do the right block.



step 2

CASTER BLOCKS TO ARMS

- 1 Attach one caster block assembly to the #7206 a-arm with a #6227 hinge pin.
- 2 Add A #6299 E-clip to both sides.
- 3 Now assemble the other side.



BAG D

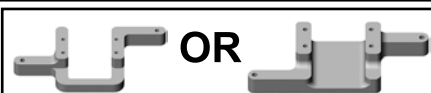
REMOVE THESE
PARTS FOR:
Step 1



7773, qty 4
6-32 x 3/8 screw



6292, qty 2
4-40 x 3/8 screw



7770, qty 1
non pull start engine
mount

7771, qty 1
pull start engine
mount



TEAM/FT ONLY
7772, qty 1
transmission mount

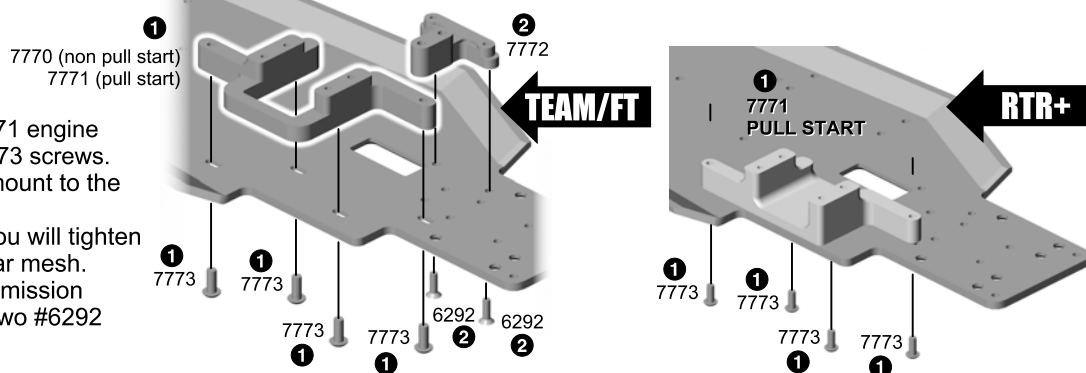
TOOLS USED

1/16", 5/64"

step 1

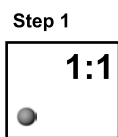
ATTACH MOUNTS

- TEAM/FT:** Attach the #7770 or 7771 engine mount to the chassis with four #7773 screws.
RTR+: Attach the #7771 engine mount to the chassis with four #7773 screws.
ALL: Do not fully tighten down. You will tighten them down when you set your gear mesh.
- TEAM/FT:** Attach the #7772 transmission mount/ brace to the chassis with two #6292 screws.

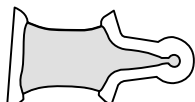


BAG E

REMOVE THESE
PARTS FOR:
Steps 1-3



6581, qty 12
large diff ball



6591, qty 1
Stealth lube



7664, qty 1
2.60:1 diff gear



TEAM/FT 6589, qty 1
5/32 x 5/16 ball bearing
unflanged



RTR+/TEAM BUILT 6597, qty 1
5/32 x 5/16 bushing
unflanged

TOOLS USED

5/64"

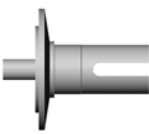
Step 2



6575, qty 1
T-nut

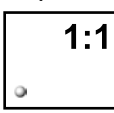


6582, qty 1
diff spring



7668, qty 1
left outdrive hub

Step 3



6574, qty 6
small diff ball



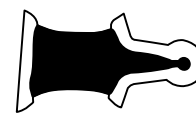
6575, qty 1
bolt cover



6575, qty 1
diff bolt



6573, qty 2
washer



6588, qty 1
black grease

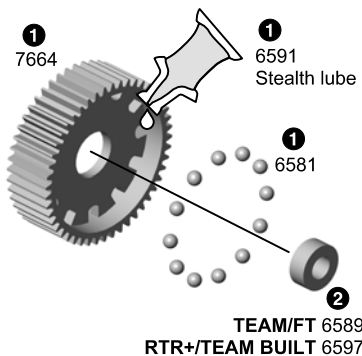


7667, qty 1
right outdrive hub

step 1

SET UP DIFF GEAR

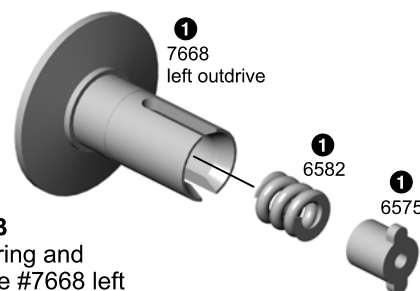
- Add a generous amount of #6591 diff lube to the #7664 differential gear holes and push the twelve large #6581 diff balls into the holes. Then push back in the lube that came out.
- Insert one #6589 bearing or #6597 bushing into the gear.



step 2

SET UP LEFT HUB

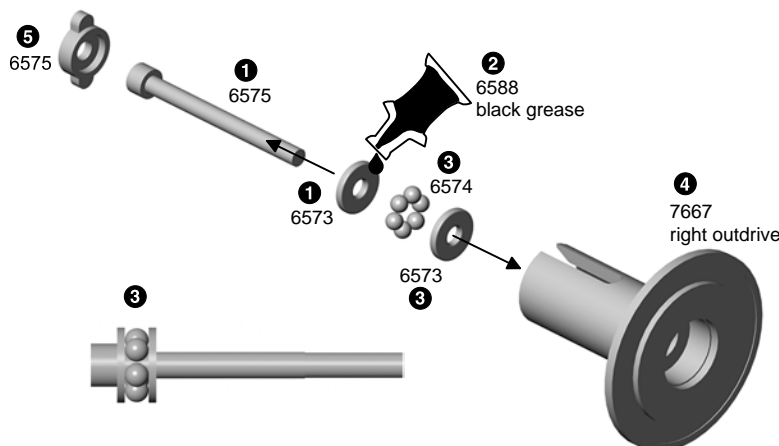
- Push the #6582 spring and #6575 T-nut into the #7668 left outdrive.



step 3

SET UP RIGHT HUB

- Slide one #6573 washer onto the #6575 bolt.
- Apply a generous amount of #6588 black grease to the washer on the side facing away from the bolt head.
- Place six #6574 balls into grease against the #6575 bolt and washer. Add the other #6575 washer. The grease will hold the balls in place during assembly, sandwiched between the washers. See figure for installed view.
- Slide the thrust assembly into the #7667 right outdrive hub, being careful not to lose any of the balls.
- Insert the #6575 bolt cover into the #7667 outdrive.



BAG E

REMOVE THESE PARTS FOR:
Steps 4-5

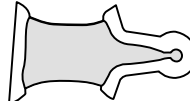
Step 4



TEAM/FT 6589, qty 1
5/32 x 5/16 ball bearing
unflanged



RTR+/TB 6597, qty 1
5/32 x 5/16 bushing
unflanged

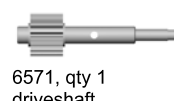


6591, qty 1
Stealth lube

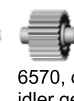


7666, qty 2
diff drive ring

Step 5



6571, qty 1
driveshaft

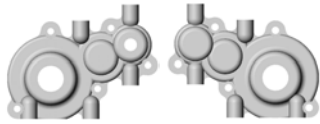


6570, qty 1
idler gear

TOOLS USED

5/64"

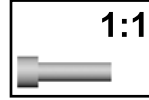
Step 5



7661, qty 1
transmission case,
left & right



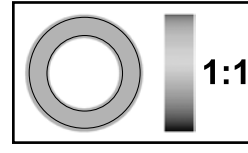
7669, qty 2
spacer



6924, 6860*, qty 5
4-40 x 3/8 screw



7665, qty 1
roll pin



3976, qty 2
3/8 x 5/8 ball bearing
unflanged



3977, qty 4
3/16 x 3/8 ball bearing
unflanged

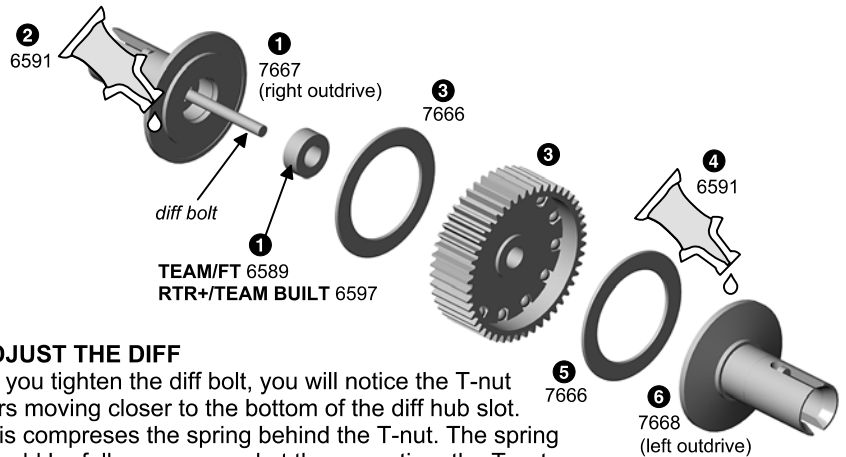
step 4

ASSEMBLE HUBS

- 1 Insert one #6589 bearing or #6597 bushing into the #7667 right outdrive.
- 2 Add a light coat of #6591 Stealth lube to the recessed area of the face.
- 3 Place a #7666 diff drive ring and then the gear assembly on the outdrive.
- 4 Add a light coat of #6591 Stealth lube to the #7668 left outdrive recessed area of the face.
- 5 Place a #7666 diff drive ring on the outdrive.
- 6 Push the #7668 left outdrive assembly against the other side of the gear.

CHECK ALIGNMENT OF HUBS

- 7 Tighten the diff bolt with your 5/64 Allen wrench, but not completely.
- 8 Rotate the diff hubs several times as you are tightening the bolt to check proper alignment of the parts. **READ STEPS 9-11 CAREFULLY.**



ADJUST THE DIFF

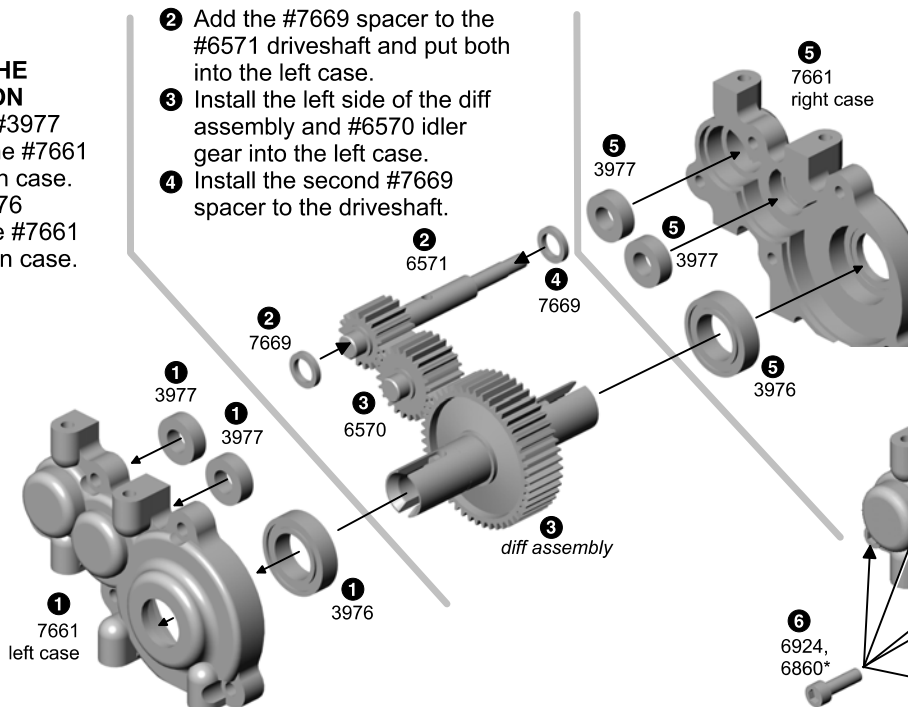
- 9 As you tighten the diff bolt, you will notice the T-nut ears moving closer to the bottom of the diff hub slot. This compresses the spring behind the T-nut. The spring should be fully compressed at the same time the T-nut reaches the end of the slot. **CAUTION:** Pay close attention to feeling when the spring is fully compressed. **Do not overtighten the bolt.**
- 10 When you feel the spring fully compressed, loosen the diff bolt 1/8 of a turn. No more, no less. Your diff should feel smooth when turning the hubs in opposite directions.
- 11 After you have driven the truck once, recheck the diff adjustment.

step 5

ASSEMBLE THE TRANSMISSION

- 1 Install the two #3977 bearings into the #7661 left transmission case. Install one #3976 bearing into the #7661 left transmission case.

- 2 Add the #7669 spacer to the #6571 driveshaft and put both into the left case.
- 3 Install the left side of the diff assembly and #6570 idler gear into the left case.
- 4 Install the second #7669 spacer to the driveshaft.



- 5 Install the remaining #3977 bearings into the right transmission case. Install one #3976 bearing into the right transmission case and put the case halves together.
- 6 Screw the transmission cases together with five #6924 (6860*) screws.
- 7 Insert the #7665 roll pin into the shaft hole with your needlenose pliers. Center the pin in the shaft.

BAG F

REMOVE THESE PARTS FOR: Steps 1-4

Step 1



7554, 7561B*, qty 1
brake adapter



9251, qty 1
inner torque
clutch hub



7553, qty 1
brake disc

Step 2



6599, qty 1
3/16 x 3/8 bushing
unflanged



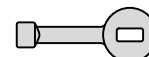
9253, qty 1
clutch disc



9252, qty 1
outer hub

TOOLS USED

1/16", 3/32"



6594, qty 2
thin washer
silver color



6594, qty 1
thick spacer
gold color



6587, qty 1
torque control spring



6629, qty 1
5-40 locknut

Step 3

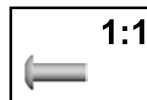


7551, qty 1
brake bracket

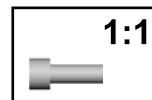


7552, qty 1
brake shoe

Step 4



6919, qty 2
4-40 x 5/16 screw

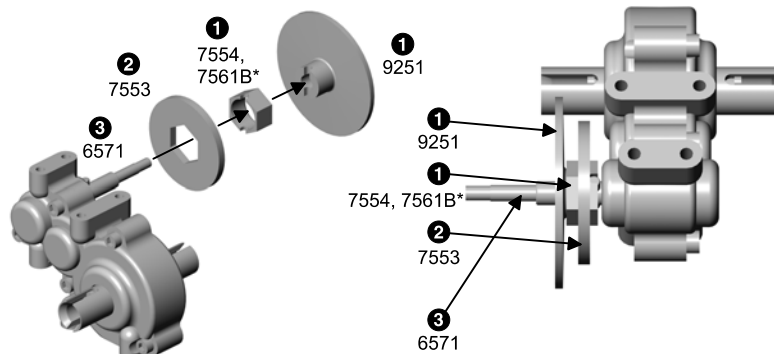


4145*, qty 2
4-40 x 5/16 screw

step 1

ASSEMBLE BRAKE ADAPTER

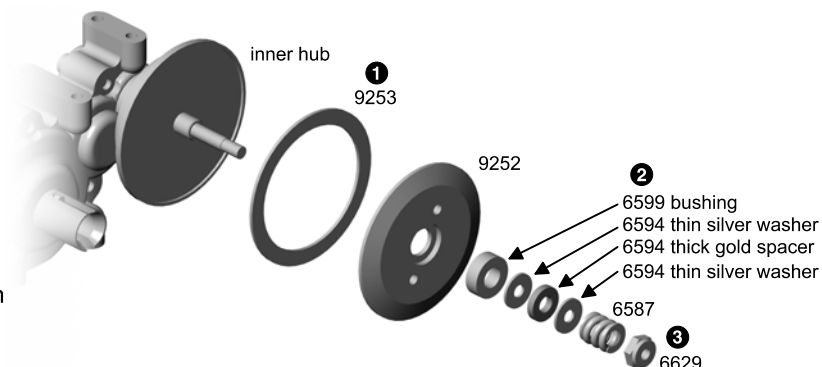
- 1 Install the #7554 (7561B*) brake adapter onto the #9251 inner torque clutch hub with the notches lining up.
- 2 Install the #7553 brake disc onto the #7554 brake adapter.
- 3 Slide the brake disc assembly onto the #6571 driveshaft, lining up the pin with the notches on the hub and brake adapter.



step 2

ASSEMBLE TORQUE CONTROL

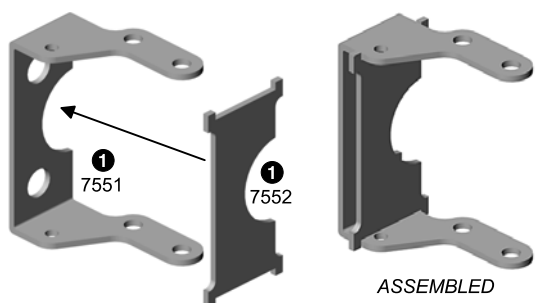
- 1 Install the #9253 clutch disc into the inner hub, then add the #9252 outer hub and #6599 bushing.
- 2 Install parts in the following order: #6594 thin silver washer, #6594 thick gold spacer, #6594 thin silver washer and #6587 black spring.
- 3 Thread on the #6629 locknut and tighten it down so the end of the shaft is flush with the end of the nut.



step 3

BRAKE BRACKET

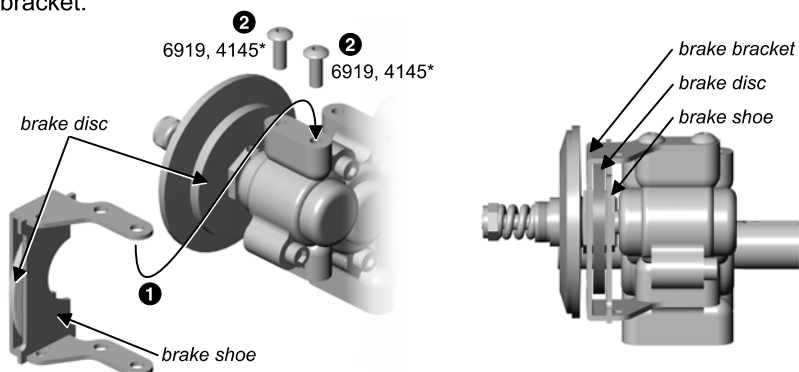
- 1 Slide the #7552 brake shoe onto the #7551 brake bracket so that the side with the rounded notch in the center is on the same side as the matching notch in the brake bracket.



step 4

INSTALL BRAKE BRACKET

- 1 Slide the brake bracket assembly onto the transmission. Make sure the brake disc is centered between the brake bracket and brake shoe as shown.
- 2 Secure the bracket to the transmission as shown, using two #6919 (4145*, different head type than shown in figure) screws in the top holes of the brake bracket.



ASSEMBLED

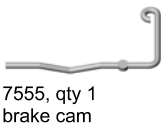
BAG F

REMOVE THESE PARTS FOR: Steps 5-7

Step 5



7556, qty 1
brake cam clip



7555, qty 1
brake cam

Step 6



6568, qty 2
4-40 x 3/16 screw

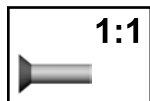


7663, qty 1
spur gear
66 tooth, 32 pitch

Step 7



7672, qty 2
4-40 x 7/8 screw



6292, 6934*, qty 4
4-40 x 3/8 screw



RTR+ ONLY 7772, qty 1
transmission mount

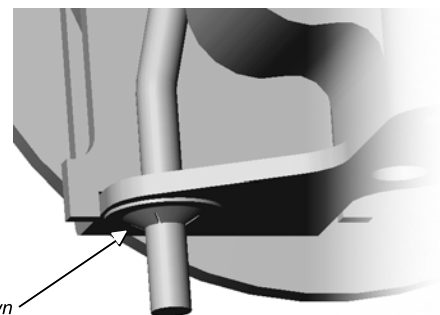
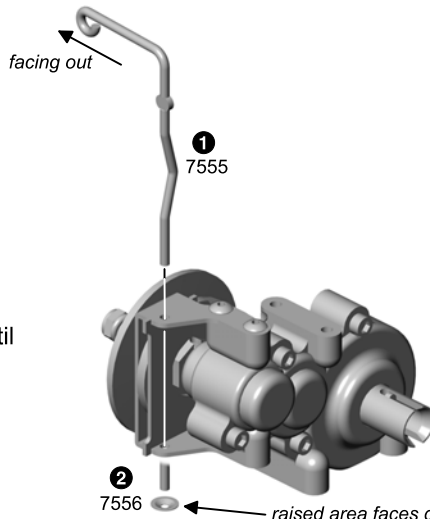
TOOLS USED

1/16"

step 5

INSTALL BRAKE CAM

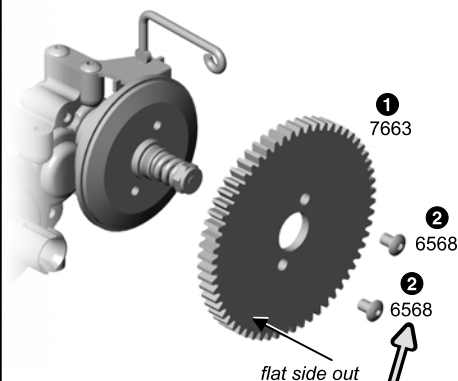
- 1 Push the #7555 disc brake cam through the hole on the top side of the bracket and then through the hole in the lower end of the bracket. Make sure the brake cam is facing out.
- 2 **WARNING: The brake cam clips are designed to be installed and not easily removed. Take your time and do it right.** Install the #7556 brake cam clip onto the cam until it almost touches the brake bracket. **Make sure the clip is put on with the raised center hole away from the bracket.**



step 6

INSTALL SPUR GEAR

- 1 Slide the #7663 spur gear onto the outer slipper hub, with the gear's flat side out.
- 2 Tighten down the spur gear with two #6568 screws.



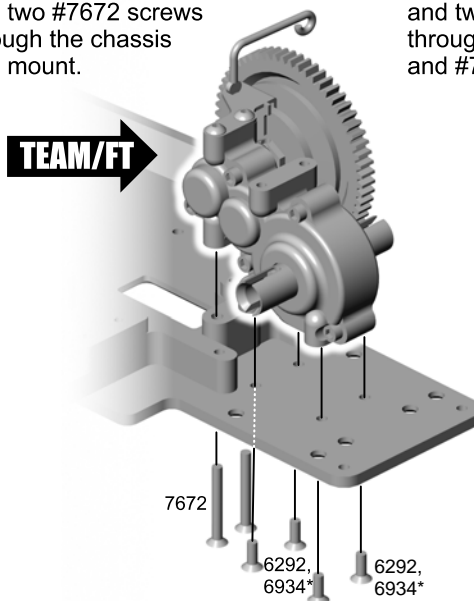
RACERS TIP

Use #1596 Associated locking adhesive on the two #6568 screws

step 7

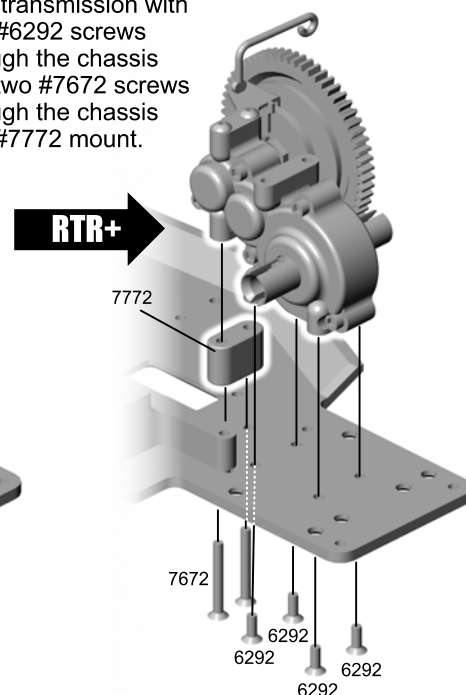
MOUNT TRANSMISSION

TEAM/FT: Mount your transmission with four #6292 (6934*) screws through the chassis and two #7672 screws through the chassis and mount.



MOUNT TRANSMISSION

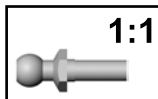
RTR+ ONLY: Mount your transmission with four #6292 screws through the chassis and two #7672 screws through the chassis and #7772 mount.



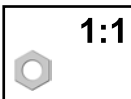
BAG G

REMOVE THESE PARTS FOR:
Steps 1-4

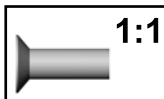
Step 1



6273, qty 2
long ball end



7260, qty 2
plain nut



6280, 6942*, qty 2
8-32 x 1/2 screw



7526, qty 1
rear bulkhead



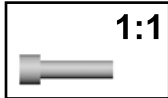
6272, qty 2
dust cover

TOOLS USED

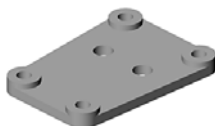
1/16", 3/32"



Step 2

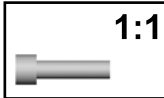


6924, 6860*, qty 4
4-40 x 3/8 screw



7670, qty 1
transmission brace

Step 3



6924, 6860*, qty 4
4-40 x 3/8 screw



7260, qty 2
plain nut



6927, qty 2
4-40 x 3/4 screw

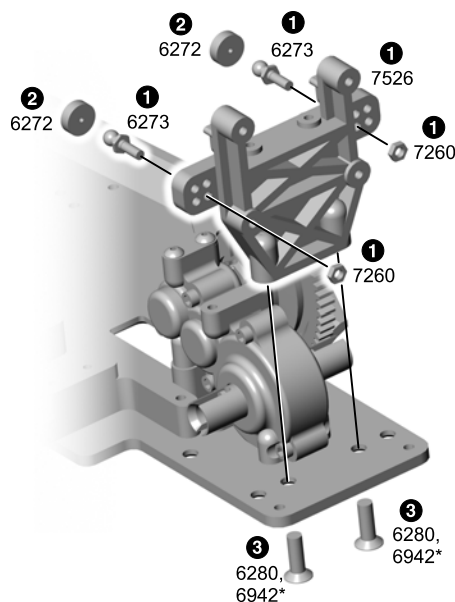


7654, 7656*, qty 1
rear shock tower

step 1

SET UP REAR BULKHEAD

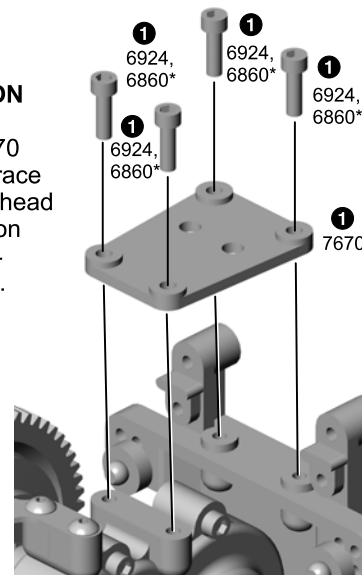
- 1 Install the #6273 long ball ends into the lower inner holes on the #7526 rear bulkhead. Thread #7260 plain nuts on the opposite side.
- 2 Add #6272 foam dust covers to the ball ends.
- 3 Attach the rear bulkhead to the chassis with two #6280 (6942*) screws.



step 2

ATTACH TRANSMISSION BRACE

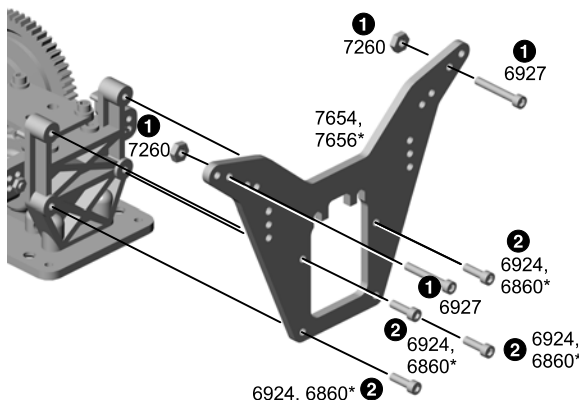
- 1 Mount the #7670 transmission brace to the rear bulkhead and transmission with four #6924 (6860*) screws.



step 3

INSTALL REAR SHOCK TOWER

- 1 Install the #6927 screws into the inner holes of the #7654 (7656*) rear shock tower. Then thread on the #7260 plain nuts.
- 2 Attach the #7654 rear shock tower to the rear bulkhead with four #6924 (6860*) screws.



BAG H

REMOVE THESE PARTS FOR:
Steps 1-2



6299, qty 4
E-clip



6925, 7873*, qty 4
4-40 x 1/2 screw



7356, qty 2
rear inner hinge pin
2.084"

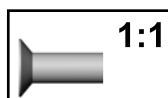


7652, qty 2
rear arm mount
3° toe-in/ 2° anti-squat

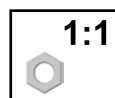
TOOLS USED

3/32"

Step 2



7775, qty 4
8-32 x 7/16
steel screw



7260, qty 2
plain nut



7529, qty 1
rear bumper



6922, qty 2
4-40 x 1/2 screw



7354, qty 2
rear suspension arm
(right arm shown)

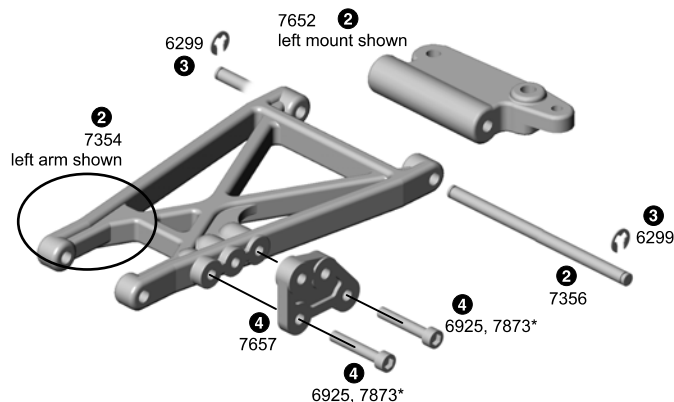


7657, qty 2
arm shock mount

step 1

ASSEMBLE REAR A-ARMS

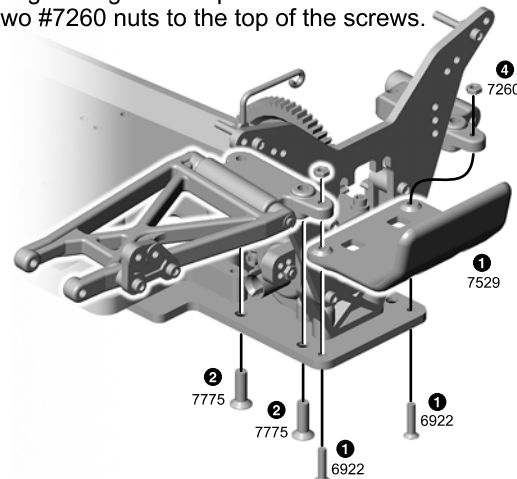
- 1 Twist the #7354 rear suspension arms from the mold runners with pliers and trim away any remaining molding with your hobby knife.
- 2 Attach the #7354 left rear a-arm to the #7652 left rear arm mount with one #7356 hinge pin.
- 3 Add #6299 E-clips to both ends of the hinge pin.
- 4 Attach the #7657 a-arm shock mount to the rear a-arm with two #6925 (7873*) screws.
- 5 Do the right a-arm.



step 2

MOUNT REAR A-ARMS & REAR BUMPER

- 1 Attach rear bumper to the chassis with two #6922 screws. Tighten only until they are flush with the top of the bumper.
- 2 Attach the left rear arm assembly to the chassis with two #7775 screws.
- 3 Attach the right rear arm assembly to the chassis with two #7775 screws.
- 4 Finish tightening the bumper screws. Add two #7260 nuts to the top of the screws.

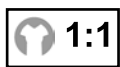


BAG I

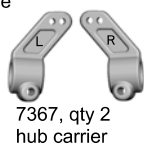
REMOVE THESE PARTS FOR:
Steps 1-4



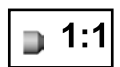
7377, qty 2
spacer



6299, qty 4
E-clip



7367, qty 2
hub carrier



TEAM/FT
7381, qty 2
set screw



7369, qty 2
spring pin



7368, qty 2
thick shim



6381, qty 2
rear outer hinge pin



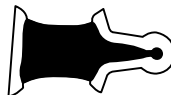
7361, qty 2
dogbone



6466, qty 2
1/8" spacer



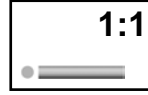
7368, qty 4
thin shim



6588, qty 1
black grease

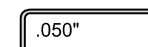


3977, qty 4
3/16 x 3/8 ball bearing
unflanged



TEAM/FT
7381, qty 2
cross pin

TOOLS USED



.050"



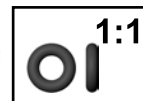
TEAM/FT
7379, qty 2
MIP CVD bone



RTR+
7365, qty 2
hub carrier



7378, qty 2
stub axle



5407, qty 4
red O-ring

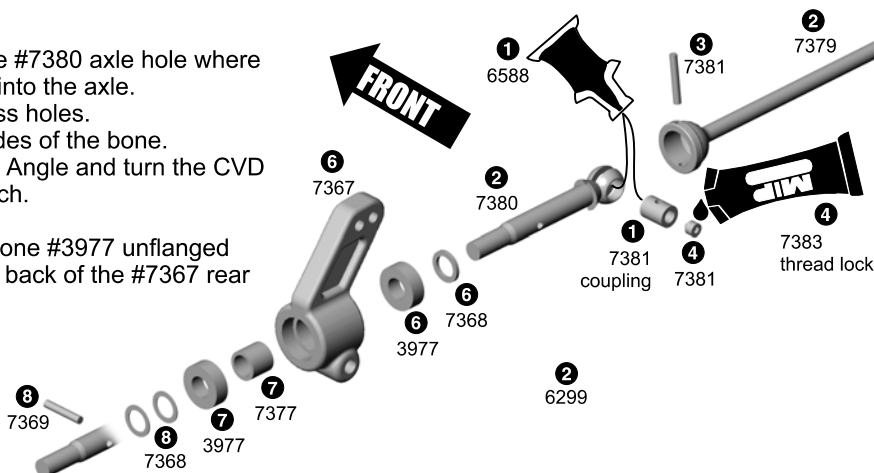
BAG I:

IF YOU HAVE THE TEAM or FT, FOLLOW STEPS 1-2 ONLY.
IF YOU HAVE THE RTR+ FOLLOW STEP 3 ONLY.
IF YOU HAVE THE TEAM-BUILT, FOLLOW STEP 4 ONLY.

step 1

TEAM/FT ONLY: ASSEMBLE MIP CVD'S

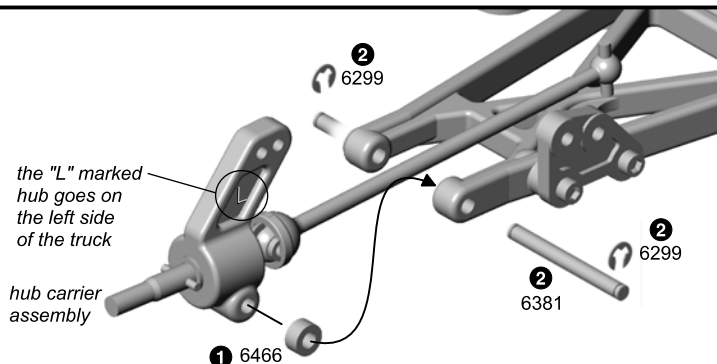
- 1 Spread some #6588 Associated black grease inside the #7380 axle hole where shown, then on the #7381 coupling. Slide the coupling into the axle.
- 2 Slide the axle into the #7379 dogbone, aligning the cross holes.
- 3 Insert the #7381 cross pin, spacing it evenly on both sides of the bone.
- 4 Add the #7383 MIP thread lock to the #7381 set screw. Angle and turn the CVD so the set screw can be screwed in with the Allen wrench.
- 5 Repeat steps 1-4 for the remaining CVD.
- 6 Slide one #7368 **thick** shim onto the #7380 axle. Slide one #3977 unflanged bearing onto the axle. Push the CVD assembly into the back of the #7367 rear hub carrier.
- 7 Slide one #7377 spacer into the hub carrier from the front followed by the second #3977 bearing.
- 8 Slide two #7368 **thin** shims onto the axle. Install the #7369 drive pin with your needlenose pliers.
- 9 Assemble the other hub carrier.



step 2 TEAM/FT

TEAM/FT ONLY: MOUNT REAR HUB CARRIERS

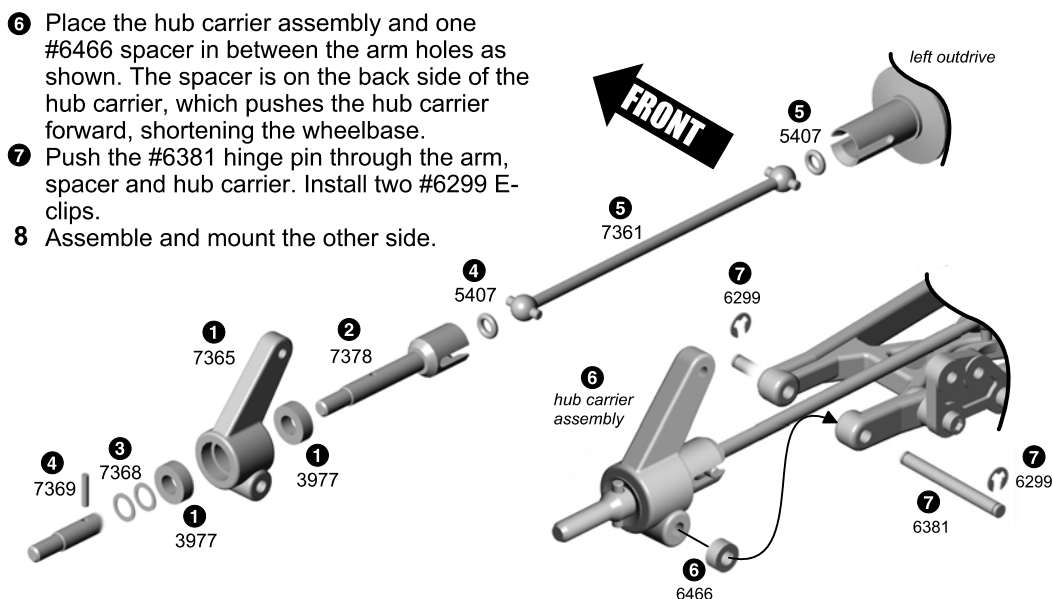
- 1 Place the left rear hub carrier assembly and one #6466 spacer between the arm holes as shown. The spacer is on the back side of the hub carrier, shortening the wheelbase.
- 2 Install the #6381 hinge pin through the arm and hub carrier. Install two #6299 E-clips.
- 3 Mount the right side.



step 3 RTR+ ONLY

RTR ONLY: ASSEMBLE REAR AXLES

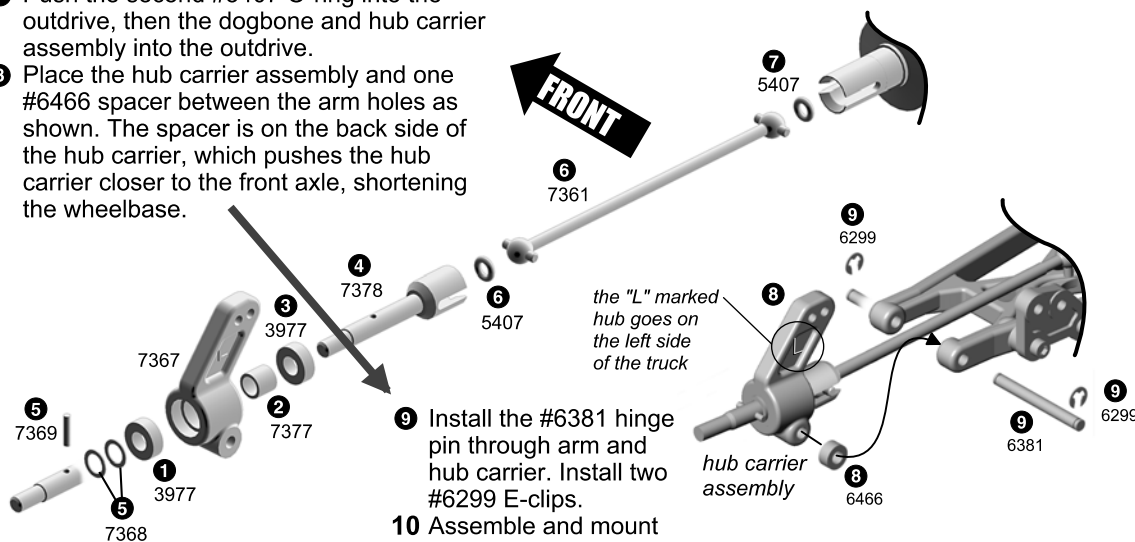
- 1 Install a #3977 bearing into both ends of the #7365 hub carrier.
- 2 Push the #7378 axle into the hub carrier.
- 3 Slide two #7368 shims onto the axle. Install the #7369 drive pin into the axle with your needle nose pliers, making sure to center the pin onto the axle.
- 4 Push a #5407 O-ring into the hub carrier, then slide the #7361 dogbone in.
- 5 Push the second #5407 O-ring into the outdrive. Slide the dogbone and hub carrier assembly into the outdrive.



step 4 TEAM BUILT

TEAM BUILT: ASSEMBLE REAR AXLES

- 1 Push one #3977 bearing into the front of the #7367 hub carrier.
- 2 Slide a #7377 spacer into rear of #7367 hub carrier.
- 3 Push one #3977 bearing into the hub carrier.
- 4 Push the #7378 axle into the hub carrier.
- 5 Slide two #7368 thin shims onto the axle. Install the #7369 drive pin with your needlenose pliers and center both ends outside.
- 6 Push a #5407 O-ring into the stub axle, then the #7381 dogbone.
- 7 Push the second #5407 O-ring into the outdrive, then the dogbone and hub carrier assembly into the outdrive.
- 8 Place the hub carrier assembly and one #6466 spacer between the arm holes as shown. The spacer is on the back side of the hub carrier, which pushes the hub carrier closer to the front axle, shortening the wheelbase.
- 9 Install the #6381 hinge pin through arm and hub carrier. Install two #6299 E-clips.
- 10 Assemble and mount the other side.



BAG J

Step 1
7253, 1408*, qty 6
turnbuckle

1:1



6274, qty 10
ball cup



7217, qty 2
eyelet

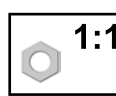


7217, qty 2
pivot ball

Step 2

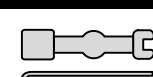


6926, qty 2
4-40 x 5/8



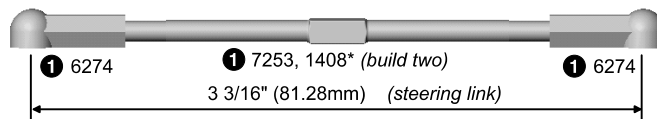
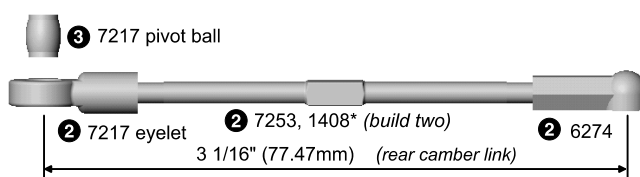
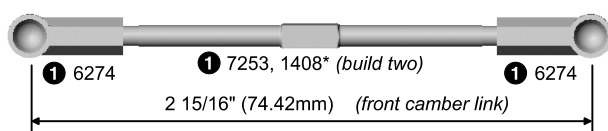
7260, qty 2
plain nut

TOOLS USED



3/32"

step 1



TURNBUCKLE SETUP

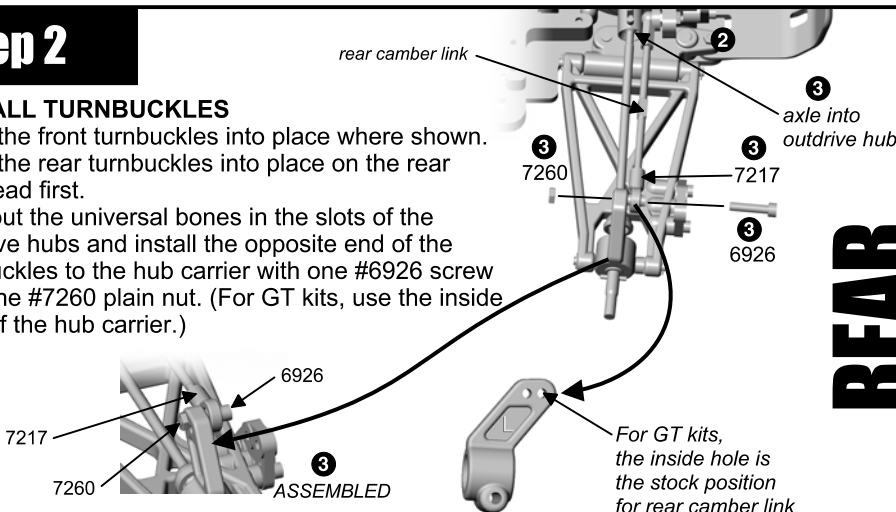
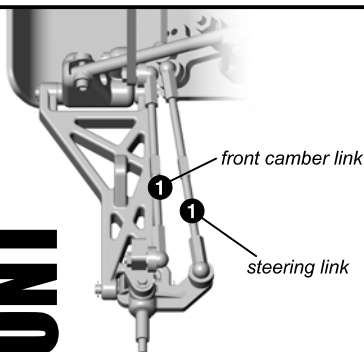
- 1 Twist the #6274 ball cups onto the #7253 steel turnbuckle (#1408* blue titanium turnbuckle) until you get the dimension shown for each part of the front turnbuckles.
- 2 Twist the #6274 ball cups and the #7217 eyelet onto the #7253 steel turnbuckle (#1408* blue titanium turnbuckle) until you get the dimension shown for each rear turnbuckle.
- 3 Now install the #7217 eyelet pivot balls into the eyelets.

step 2

INSTALL TURNBUCKLES

- 1 Snap the front turnbuckles into place where shown.
- 2 Snap the rear turnbuckles into place on the rear bulkhead first.
- 3 Now put the universal bones in the slots of the outdrive hubs and install the opposite end of the turnbuckles to the hub carrier with one #6926 screw and one #7260 plain nut. (For GT kits, use the inside hole of the hub carrier.)

FRONT

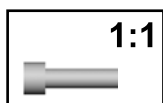


REAR

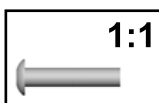
BAG K

REMOVE THESE PARTS FOR:
Steps 1-2

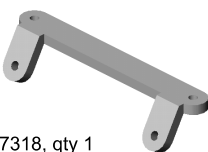
Step 1



6924, 6860*, qty 2
4-40 x 3/8 screw



6918, qty 2
4-40 x 1/2 screw

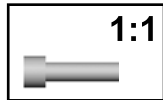


7318, qty 1
front body mount brace

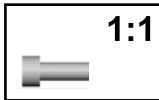


7319, qty 2
front body mount post

Step 2



6924, 6860*, qty 2
4-40 x 3/8 screw



6285, 6284*, qty 2
4-40 x 1/4 screw

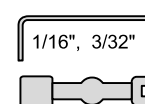


7323, qty 2
rear body post



7323, qty 2
rear body mount

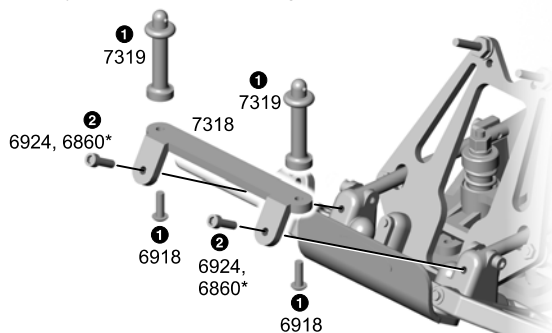
TOOLS USED



step 1

FRONT BODY MOUNTS

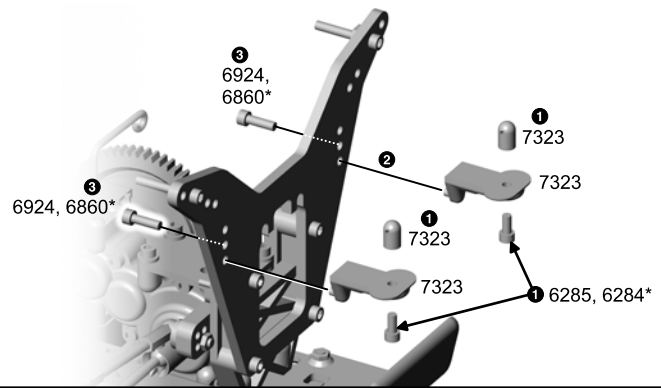
- 1 Install the two #7319 front body mounts onto the #7318 front body mount brace with two #6918 screws as shown.
- 2 Now install the front body mount brace assembly to the front bulkhead with two #6924 (6860*) screws. Make sure the body mounts are pointing up as shown.



step 2

REAR BODY MOUNTS

- 1 Attach the #7323 small round posts to the #7323 rear body mounts with two #6285 (6284*) screws.
- 2 Push the pegs of the rear body mounts into the lower holes from the back of the tower.
- 3 Screw the #6924 (6860*) screws into the middle hole from the front of the tower to secure them.



BAG 1

REMOVE THESE PARTS FOR:
Steps 1-2

Step 1



6465, qty 2
shock piston #1



6465, qty 2
shock piston #2

Step 2



6440, qty 4
split locking washer



6440, qty 8
small spacer



6440, qty 4
large spacer



6429, qty 1
shock assembly tool



TEAM/FT 6435, qty 2
1.32 rear shock body



RTR+/TEAM BUILT 6424B, qty 2
blue 1.32 rear shock body



TEAM/FT 6436, qty 2
1.02 front shock body



RTR+/TEAM BUILT 6425B, qty 2
blue 1.02 front shock body



5422, qty 1
30 wt oil

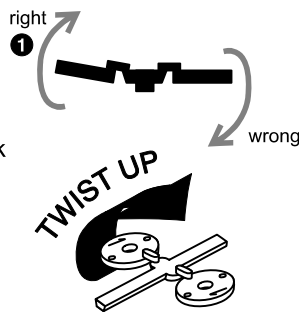


5407, qty 8
red O-ring

step 1

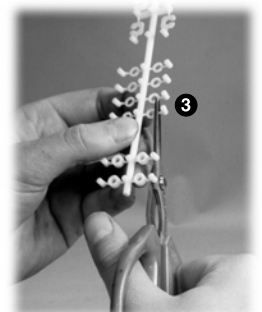
TRIM SHOCK PISTONS

- 1 Burrs interfere with smooth shock action within the shock body. To remove from tree without creating burrs, twist up, not down. Remove two each of #1 and #2.
- 2 Remove remaining burrs carefully with hobby knife.



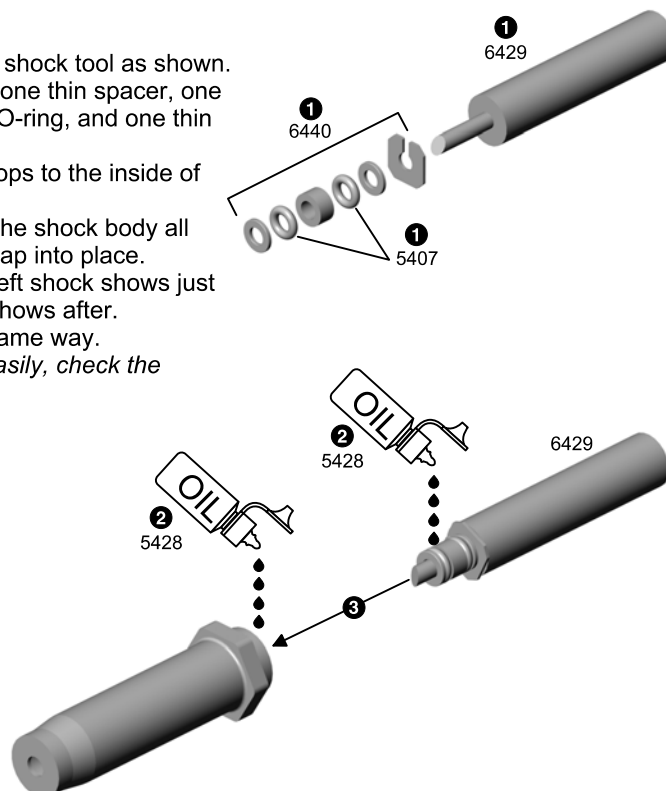
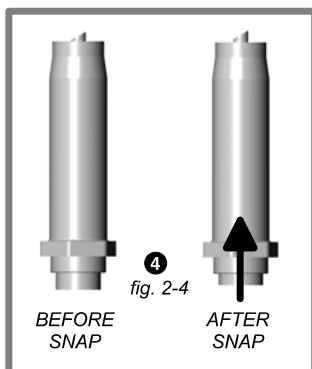
REMOVE SHOCK PARTS

- 3 Remove the #6440 shock parts from the molding tree carefully so no part of the molding runner remains. It is safer to remove a tiny amount of the shock part than to risk the chance of a burr remaining on the part. Short blade scissors or a hobby knife will work.



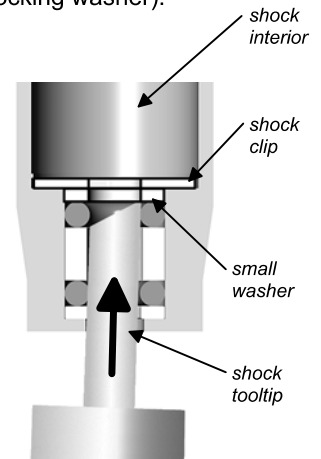
step 2

- 1 Install the shock parts onto the #6429 shock tool as shown. One shock clip (split locking washer), one thin spacer, one red O-ring, one thick spacer, one red O-ring, and one thin spacer.
- 2 Remove the #5422 oil and add 3-4 drops to the inside of the shock body and to the seal parts.
- 3 Insert the tool and the seal parts into the shock body all the way. Push easily until the parts snap into place.
- 4 Check the tool height in fig. 2-4. The left shock shows just before snapping into place, the right shows after.
- 5 Assemble the remaining shocks the same way.
If your shocks do not snap together easily, check the internal parts for burrs again.



DISMANTLING SHOCK PARTS

Here is how to dismantle the shocks when it's rebuild time. Put the shock assembly tool tip into the bottom the shock until it rests against the small washer as shown, then push to unclip the shock clip (split locking washer).



BAG 1

REMOVE THESE PARTS FOR:
Steps 3-4

Step 3



6469, qty 4
large O-ring



6459, 6417*, qty 2
1.02 front shock shaft



6458, 6416*, qty 2
1.32 rear shock shaft



6299, qty 8
E-clip

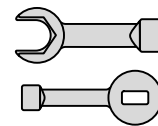


7217, qty 4
pivot ball

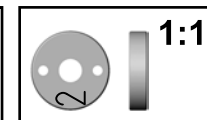


7217, qty 4
eyelet

TOOLS USED



6465, qty 2
shock piston #1
(for rear shocks)



6465, qty 2
shock piston #2
(for front shocks)

Step 4



6428, qty 4
shock cap

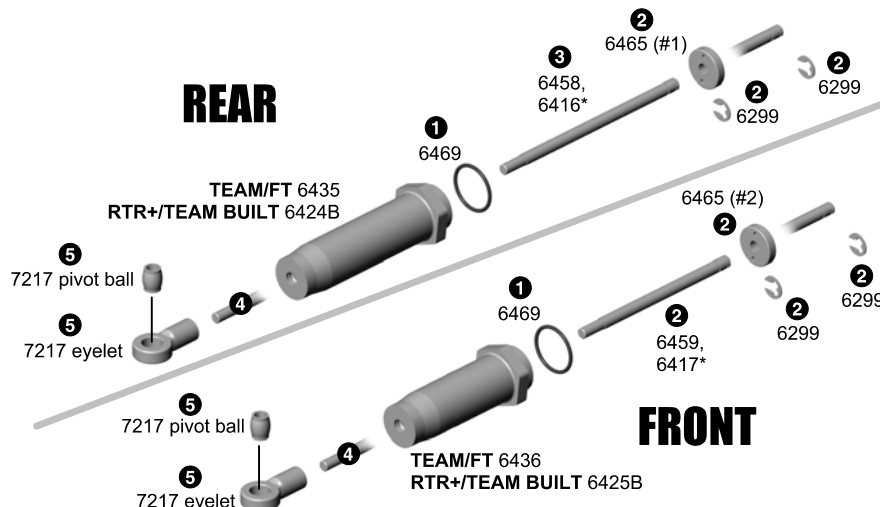


5422, qty 1
30 wt oil

step 3

ASSEMBLE SHOCKS

- 1 Install the #6469 large O-ring over the thread of each shock body.
- 2 On the #6459 (6417*) front shock shaft, install a #6299 E-clip on both sides of the #6465 (#2) piston from step #1.
- 3 On the #6458 (6416*) rear shock shaft, install a #6299 E-clip on both sides of a #6465 (#1) piston from step #1.
- 4 Insert the shock shaft assemblies into the shock bodies.
- 5 Push the #7217 pivot ball and eyelet together.
- 6 As you hold the shaft with a rag and needlenose pliers next to the threads, screw the eyelet onto the end of each shock shaft.



step 4

FILLING THE SHOCKS

- 1 Holding the shocks upright, fill with oil to the top of the shock body.
- 2 Slowly move the shaft up and down several times to allow air bubbles to escape to the top.
- 3 Refill with oil to the top of the shock body.
- 4 Push the shaft in until the piston is level with top of shock body. The oil will slightly bulge up above the shock body.
- 5 Fill the #6428 shock cap about halfway with oil and install it onto the body. Try to retain as much oil as possible during assembly. The shaft will extend out as you tighten the cap down.



HOW TO
TIGHTEN
THE CAP
ON YOUR
SHOCK

SETTING THE REBOUND

- 6 Move the shock shaft in and out a few times and then push it all the way in. It should be easy to push the shaft in until the eyelet hits the body.

- 7 Then the shaft should push itself out approximately 1/4" to 3/8" (6.3mm - 9.5mm).
- 8 If the shock does not push out this far, there is not enough oil in them. Add just a little oil and try steps 6-7 again.
- 9 If the shocks push out farther than the distance in step seven, or you cannot push the shaft in until the eyelet hits the body, there is too much oil. Loosen the cap a half turn (with the shaft extended) and pump out a small amount of oil by pushing the shaft in. Retighten the cap and try steps 6-7 again.

