

For Immediate Release: December 14, 2023

#70031 Pro2 LT10SW Ryan Beat RTR #70031C Pro2 LT10SW Ryan Beat RTR LiPo Combo



ELECTRIC ▪ OFF ROAD ▪ 1:10 SCALE ▪ 2 WHEEL DRIVE ▪ RTR

Four-time Lucas Oil Off Road Racing Series (LOORRS) champion, **Ryan Beat**, lives for competition. For the last decade, Ryan has raced at short course tracks across the U.S., claiming records, wins, championships, and winning the hearts of fans. Ryan Beat started Ryan Beat Motorsports (R/BM) in 2015 with his dad, a few friends, and a passion for racing. Ryan built a PRO-LITE truck and went full-time racing in the Lucas Oil Off Road Racing Series (LOORRS). Since then, R/BM has grown to a multi-truck team, with a state-of-the-art 15,000 sq. ft. facility.

The R/BM team is the largest team currently racing in the Championship Off-Road Series with entries in the PRO2, PRO-LITE, and PRO-SPEC classes. As a four-time champion himself, Ryan is committed to performance, and attributes the growth and success of the team to a world-class sponsorship base. R/BM is proud to support its partners with on-track performance and best-in-class marketing services.

Built on hard work, determination, and a passion for racing, R/BM has built a winning reputation and is known as a leader in the off-road racing community. Stay tuned as the team expands its racing footprint into other series.

Team Associated's new Pro2 LT10SW short course truck is a highly detailed and fun-to-drive Ready-to-Run RC truck. Based on our championship-winning Short Course truck, the Pro2 LT10SW features some of the latest features in racing. A durable lightweight aluminum top shaft, rugged steel turnbuckles and adjustable suspension geometry give the Pro2 LT10SW the ultimate in handling on all terrain. This makes it a perfect platform for short course racing!

The **#70031C LiPo Combo** has the added benefit of a Reedy Compact Balance Charger and Reedy LiPo battery pack included!

HIGHLIGHTS

PRO² LT10^{SW} SHORT WHEELBASE



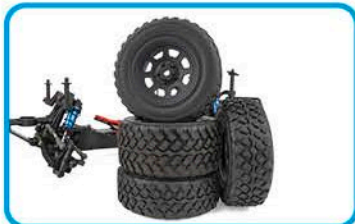
65mm rear CVA drive shafts for reliability



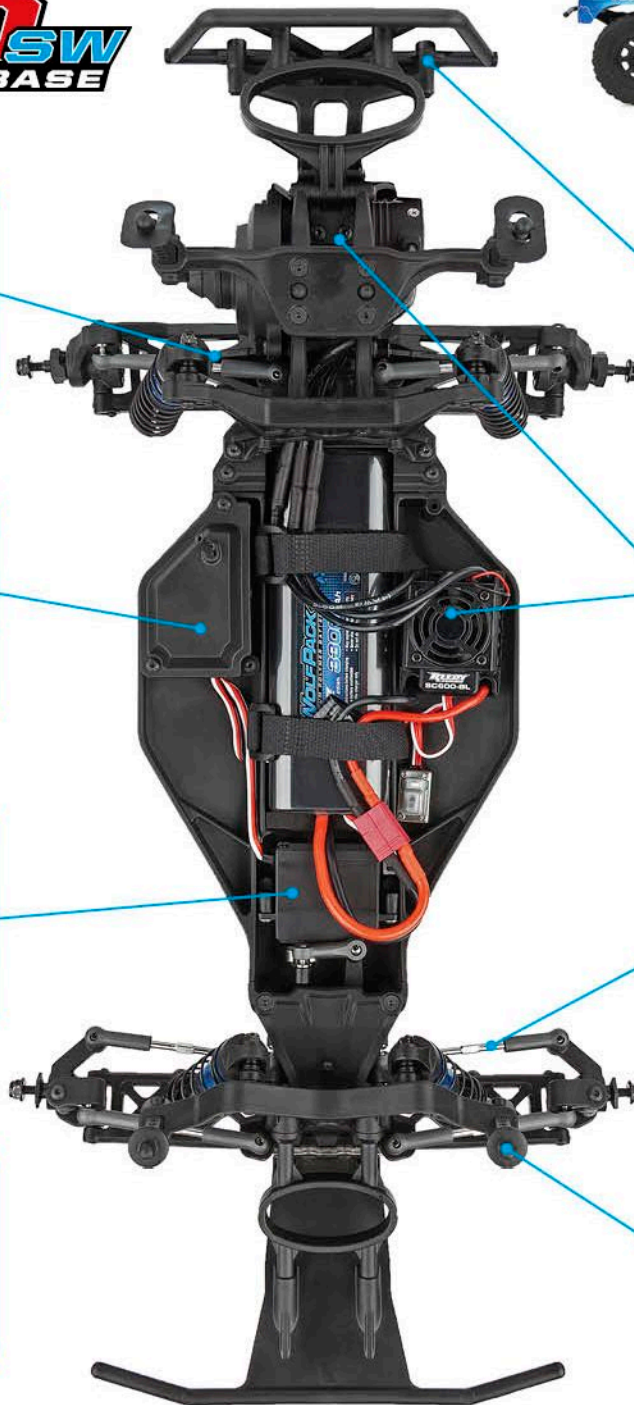
Water-resistant enclosed receiver box



High-torque, metal-gear Reedy servo with spring-style servo saver



Lightweight street stock-inspired wheels wrapped with high-grip all-terrain tires



Impact-resistant front and rear bumpers



Equipped with Reedy SC600-BL brushless ESC with T-plug connector and Reedy 3300kV sensorless brushless motor



Rugged steel turnbuckles for adjustable camber and front toe-in



Adjustable body mounts

Due to ongoing R&D, photos may not match final kit. Vehicle shown on these pages equipped with items NOT included in #70031: Reedy battery.

MORE FEATURES

- Durable and lightweight aluminum top shaft
- Low center-of-gravity molded composite chassis with hook-and-loop battery straps that accommodate both NiMH and 2S and 3S LiPo battery packs
- Metric hardware throughout
- 22 precision rubber-sealed ball bearings
- Impact-absorbing front and rear bumpers
- Adjustable body mounts
- Rear CVA drive shafts for more reliability
- Aluminum 12mm big bore coil-over shock absorbers
- 2.6:1 ratio gearbox with heavy-duty sealed gear differential and externally adjustable slipper clutch
- Rugged steel turnbuckles for adjustable camber and front toe-in
- Adjustable suspension geometry
- Vertical ball ends for roll center adjustments, front and rear

SPECIFICATIONS

Scale	1:10
Power	Electric
Length	492.4mm (19.38")
Width	252mm (9.92")
Weight	Varies
Wheelbase	227.8mm (10.94")
Transmission Ratio	2.6:1

ITEMS NEEDED TO COMPLETE

- **#70031, 70031C:** Four AA batteries for radio
- **#70031:** Suitable NiMH or 2S or 3S LiPo battery for vehicle
- **#70031:** Charger suitable for chosen battery

CATALOG INFORMATION

UPC	Part No.	Description	MSRP	MAP	Available
784695700314	70031	PRO2 LT10SW Ryan Beat RTR	\$515.99	\$349.99	BUY NOW!
784695983496	70031C	PRO2 LT10SW Ryan Beat RTR LiPo Combo	\$609.99	\$415.99	BUY NOW!

COMPARISON CHART

Model version		Electronics Included			
Part No.	Description	Motor	Radio, Servo, ESC, Receiver	Charger	Battery
70031	PRO2 LT10SW Ryan Beat RTR	brushless	included	none	none
70031C	PRO2 LT10SW Ryan Beat RTR LiPo Combo	brushless	included	included	LiPo

Download all zipped photos here: <https://rc10.com/70031RyanBeatzip/> (11MB) Link is active for 30 days.

See the next page for hop-ups and support parts already available as of this date!

Already released: HOP-UP AND SUPPORT PARTS

UPC	Part No.	Description	MSRP	Web
784695007550	755	WolfPack LiPo 4500mAh 35C 11.1V	\$111.99	\$66.99
784695270336	27016	Blackbox 610R Competition ESC	\$319.99	\$190.99
784695272033	27203	Reedy 1416-C2L Dual AC/DC Competition Balance Charger	\$313.99	\$187.99
784695720107	72010	DR10 FT Servo Mount Set, aluminum	\$9.99	\$9.99
784695720114	72011	DR10 FT Rear Hub Set, blue aluminum	\$40.99	\$34.99
784695720145	72014	DR10 FT Arm Mount Set, aluminum	\$42.99	\$36.99
784695913929	91392	FT Aluminum Steering Set, blue	\$24.99	\$24.99



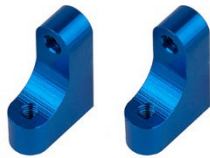
755



27016



27203



72010



72011



72014



91392



21062 Bake Pkwy
Lake Forest CA 92630
www.AssociatedElectrics.com

