

For Immediate Release: May 23, 2023

#90038 Pro2 DK10SW Dakar Buggy RTR, orange/blue

#90038C Pro2 DK10SW Dakar Buggy RTR LiPo Combo, orange/blue



ELECTRIC ■ OFF ROAD ■ 1:10 SCALE ■ 2 WHEEL DRIVE ■ RTR

Dakar Buggy Racing--All the dirt, clay and pavement-racing excitement in a 1:10 scale RTR!

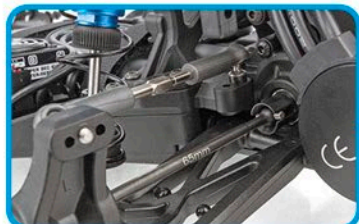
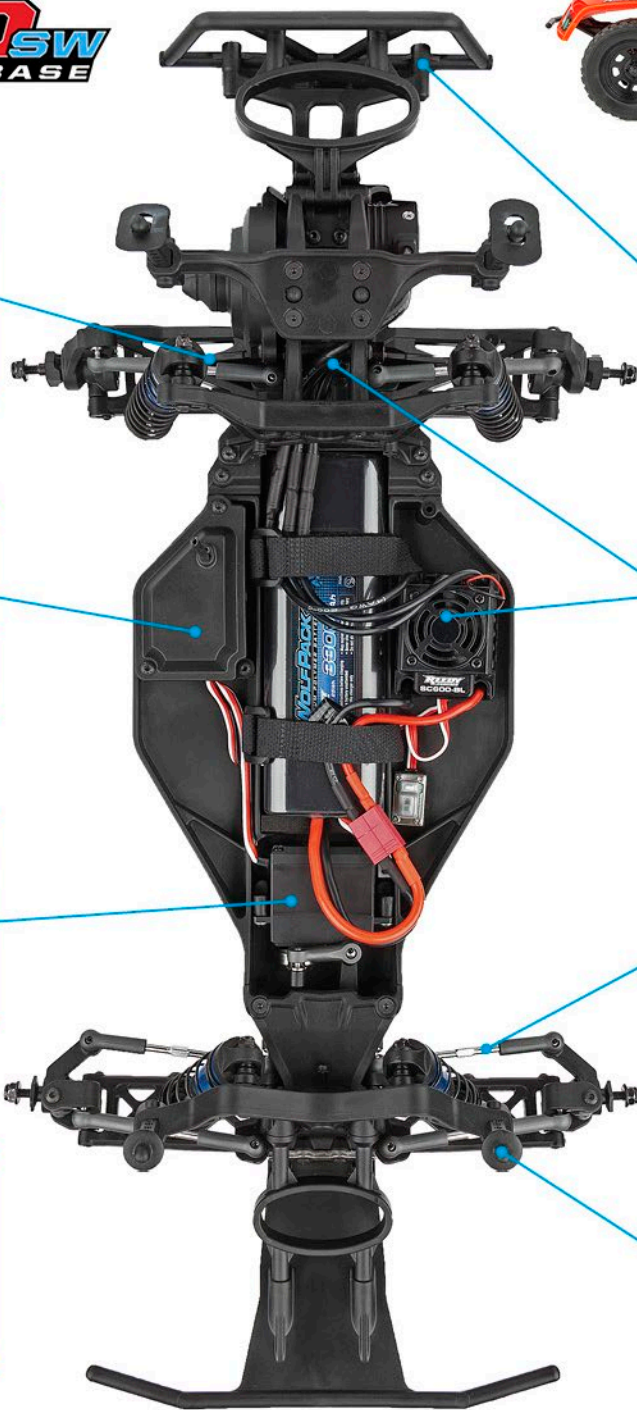
The Pro2 DK10SW Dakar Buggy is based on the 9-time ROAR Short Course National Championship-winning trucks, featuring a water-resistant high-power Reedy Power brushless speed control and 3300kV brushless motor, a 2.4GHz 2-channel radio system as well as our DVC (Dynamic Vehicle Control) receiver unit with built-in adjustable digital gyro. Add to that a Reedy Power metal-gear, digital high-torque servo and a water-resistant enclosed receiver box. All of this packaged together in an outstanding factory-finished orange and blue body. And to keep you sticking to the terrain, this DK10SW short wheelbase beast will keep you cornering with the included high-grip, all-terrain tires and lightweight wheels. *The time for tearing up the track is now!*

Team Associated's new Pro2 DK10SW Dakar Buggy is a detailed and fun-to-drive Ready-to-Run RC buggy that features some of the latest features in racing. A durable lightweight aluminum top shaft, rugged steel turnbuckles and adjustable suspension geometry give the Pro2 DK10SW the ultimate in handling on all terrain. This makes it a perfect platform for racing!

The **#90038C LiPo Combo** has the added benefit of a Reedy 123-S Compact Balance Charger and Reedy LiPo battery pack included!

HIGHLIGHTS

PRO2 DK10SW SHORT WHEELBASE



65mm rear CVA drive shafts for reliability



Water-resistant enclosed receiver box



High-torque, metal-gear Reedy servo with spring-style servo saver



Lightweight street stock-inspired wheels wrapped with high-grip all-terrain tires



Impact-resistant front and rear bumpers



Equipped with Reedy SC600-BL brushless ESC with T-plug connector and Reedy 3300kV sensorless brushless motor



Rugged steel turnbuckles for adjustable camber and front toe-in



Adjustable body mounts

Due to ongoing R&D, photos may not match final Vehicle. #90038 shown on these pages equipped with items NOT included in kit: Reedy battery.

MORE FEATURES

- Durable and lightweight aluminum top shaft
- Low center-of-gravity molded composite chassis with hook-and-loop battery straps that accommodate both 6-cell NiMH and 2S and 3S LiPo battery packs with T-type connector
- Metric hardware throughout
- 22 precision rubber-sealed ball bearings
- Impact-absorbing front and rear bumpers
- Adjustable body mounts
- Rear CVA drive shafts for more reliability
- Aluminum 12mm big bore coil-over shock absorbers
- 2.6:1 ratio gearbox with heavy-duty sealed gear differential and externally adjustable slipper clutch
- Rugged steel turnbuckles for adjustable camber and front toe-in
- Adjustable suspension geometry
- Vertical ball ends for roll center adjustments, front and rear

SPECIFICATIONS

Scale	1:10
Power	Electric
Length	492.4mm (19.38")
Width	252mm (9.92")
Weight	Varies
Wheelbase	277.8mm (10.94")
Transmission Ratio	2.6:1

ITEMS NEEDED TO COMPLETE

- **#90038, 90038C:** Four AA batteries for radio
- **#90038:** Suitable 6-cell NiMH or 2S or 3S LiPo battery with T-type connector for vehicle
- **#90038:** Charger suitable for chosen battery

CATALOG INFORMATION

UPC	Part No.	Description	MSRP	MAP	Available
784695900387	90038	Pro2 DK10SW Dakar Buggy RTR, orange/blue	\$515.99	\$349.99	May 2023
784695983632	90038C	Pro2 DK10SW Dakar Buggy RTR LiPo Combo, orange/blue	\$609.99	\$415.99	May 2023

COMPARISON CHART

Model version		Electronics Included			
Part No.	Description	Motor	Radio, Servo, ESC, Receiver	Charger	Battery
90038	Pro2 DK10SW Dakar Buggy RTR, orange/blue	brushless	included	none	none
90038C	Pro2 DK10SW Dakar Buggy RTR LiPo Combo, orange/blue	brushless	included	included	LiPo

Download all zipped photos here: <https://tinyurl.com/asc90038zip> (7.0MB). Link is active for 30 days.

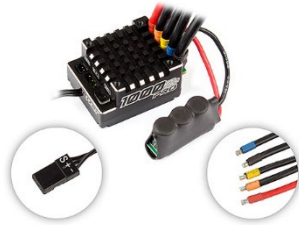
See the next page for hop-ups and support parts already available as of this date!

Already released: HOP-UP AND SUPPORT PARTS

UPC	Part No.	Description	MSRP	Web
784695007550	755	WolfPack LiPo 4500mAh 35C 11.1V	\$111.99	\$66.99
784695270336	27033	Blackbox 1000Z+ Pro Sensored ESC	\$259.99	\$154.99
784695272033	27203	Reedy 1416-C2L Dual AC/DC Competition Balance Charger	\$313.99	\$187.99
784695720664	72066	DR10M Anti-roll Bar, 3mm	\$4.99	\$4.99
784695720107	72010	DR10 FT Servo Mount Set, aluminum	\$9.99	\$9.99
784695720114	72011	DR10 FT Rear Hub Set, blue aluminum	\$40.99	\$34.99
784695720145	72014	DR10 FT Arm Mount Set, aluminum	\$42.99	\$36.99
784695913929	91392	FT Aluminum Steering Set, blue	\$24.99	\$24.99



755



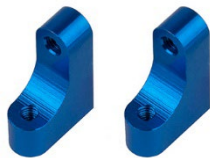
27033



27203



72066



72010



72011



72014



91392



21062 Bake Pkwy
Lake Forest CA 92630
www.AssociatedElectrics.com

