



Your journey begins here.

For Immediate Release: January 17, 2023

Enduro Trail Truck, Trailwalker Black RTR
Enduro Trail Truck, Trailwalker Black RTR LiPo Combo

#40119,
40119C



ELECTRIC ▪ OFF ROAD ▪ 1:10 SCALE ▪ 4 WHEEL DRIVE ▪ RTR

A PERFORMANCE RIG BUILT TO ENDURE. When hitting the trail, you want to do it with confidence – and the answer is the Enduro Trail Truck!

At the heart of the Enduro is our revolutionary Stealth® X gearbox. Although the exterior appears to have a conventional 3-gear transmission look, the inside is far from conventional. The Stealth® X features the ability to adjust the rear drive ratio independently of the front drive across three levels: stock overdrives the front end 5.7% (installed in RTR), option 1 provides a one-to-one drive ratio front-to-rear (available separately), and option 2 overdrives the front end 11.83% (included with RTR).

Feeding the power to the tires are 3-piece telescopic driveshafts with an extruded aluminum center section, universal front drive axles, and hardened steel ring and pinion gears. With the Enduro drivetrain, delivering useful power will not be an issue.

We relocated the steering link assembly from the conventional location to behind the axle (BTA). This feature greatly improves approach angle and front-end clearance, making rough terrain much easier to handle.

The Enduro Trail Truck with Trailwalker Black body comes ready for adventure right out of the box, with performance-driven Reedy Power electronics. The all-new, ultra-smooth, and powerful 16-turn, 5-slot brushed crawler motor and Reedy Power SC480X electronic speed controller with T-plug connector supply ample power to this tough rig. Controlling the beast on the trail is our new 3-channel XP130 2.4GHz radio and Reedy Power high-torque 1320MG metal-gear servo.

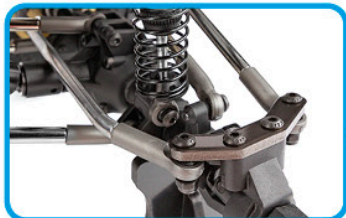
With all this packed in one box, we know the Enduro Trail Truck is ready for the trail – are you?

The **#40119C LiPo Combo** includes a Reedy Compact Balance Charger and Reedy 7.4V LiPo Battery with T-plug.

HIGHLIGHTS

ENDURO

1:10 SCALE READY-TO-RUN ROCK CRAWLER
TRAILWALKER BLACK



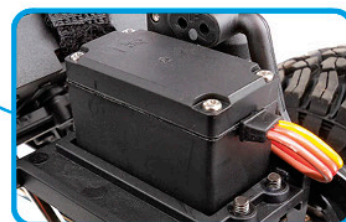
BTA STEERING & ALUMINUM STEERING PLATES: Behind-the-axle steering provides better approach angles, more clearance, and a cleaner look. Bolt-on aluminum steering plates allow for more adjustment, strength, and future modification for the user.



INTEGRATED SERVO WINCH MOUNT: Mounting a winch directly to the chassis is the strongest and most reliable spot on any trail rig. Positioned alongside the steering servo for overall chassis balance and weight distribution.



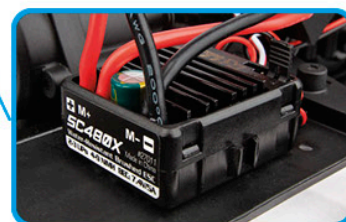
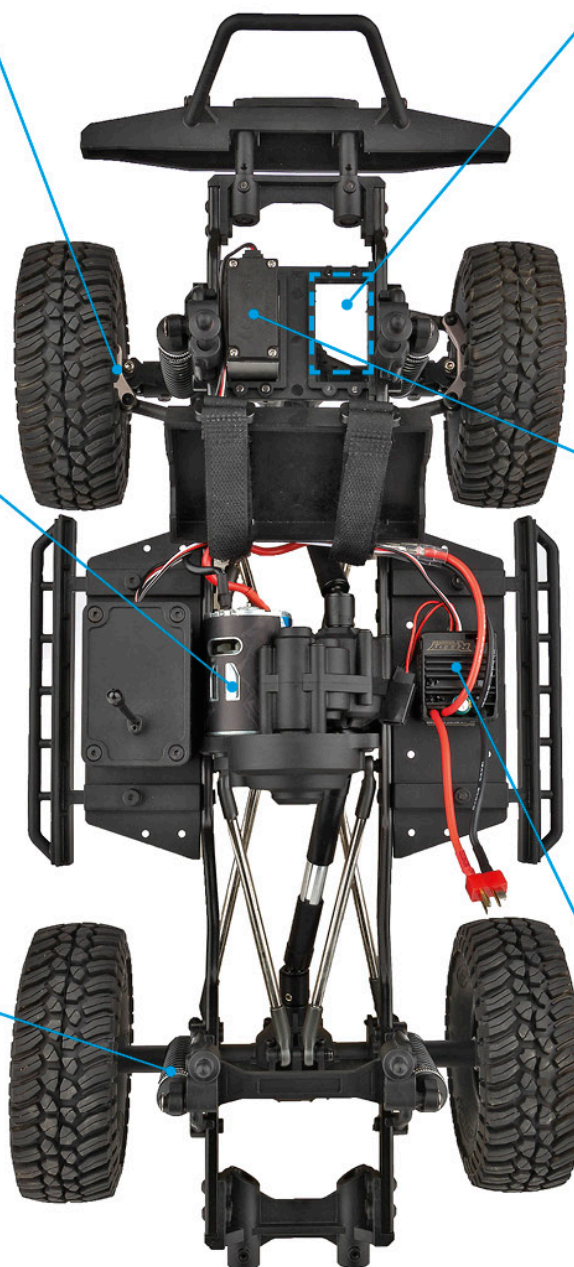
REEDY POWER CRAWLER MOTOR: The new Reedy Power 5-slot 16-turn brushed crawler motor provides ample torque with a smooth power delivery. This allows for slow precise acceleration while maintaining consistent power over rough terrain and obstacles.



RADIO & SERVO: The XP130, 2.4GHz, 3-channel radio and receiver together with a Reedy Power 1320MG (metal gear) water-resistant servo is the perfect setup for keeping the Enduro under control on the trail.



THREADED ALUMINUM SHOCK BODIES: Threaded aluminum and fluid-filled, these shocks keep the vehicle stable on the trail and retain oil even in the roughest terrain.



REEDY POWER ELECTRONIC SPEED CONTROLLER (ESC): The water resistant SC480X brushed ESC is specifically programmed for crawling with proportional forward/reverse, dual auxiliary power output leads, LiPo low-voltage cutoff protections, and T-plug connector.

*Due to ongoing R&D, photos may not match final vehicle.
Vehicle shown on these pages equipped with items NOT included in #40119 RTR: Reedy battery.*

CHASSIS FEATURES

BTA STEERING & ALUMINUM STEERING PLATES:

Behind-the-axle steering provides better approach angles, more clearance, and a cleaner look. Bolt-on aluminum steering plates allow for more adjustment, strength, and future modification for the user.

INTEGRATED SERVO WINCH MOUNT: Mounting a winch directly to the chassis is the strongest and most reliable spot on any trail rig. Positioned alongside the steering servo for overall chassis balance and weight distribution.

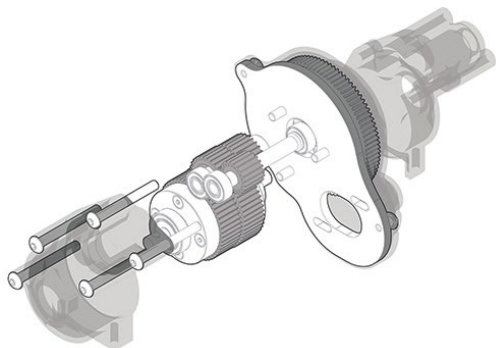
THREADED ALUMINUM SHOCK BODIES: Threaded aluminum and fluid-filled, these shocks keep the vehicle stable on the trail and retain oil even in the roughest terrain.

REEDY POWER CRAWLER MOTOR: The new Reedy Power 5-slot 16-turn brushed crawler motor provides ample torque with a smooth power delivery. This allows for slow, precise acceleration while maintaining consistent power over rough terrain and obstacles.

REEDY POWER ELECTRONIC SPEED CONTROLLER (ESC): The water-resistant SC480X brushed ESC is specifically programmed for crawling with proportional forward/reverse, dual auxiliary power output leads, LiPo low-voltage cutoff protections, and T-plug connector.

RADIO & SERVO: The XP130, 2.4GHz, 3-channel radio, and receiver, together with a Reedy Power 1320MG (metal gear) water-resistant servo pushing out 173 oz-in (12.5kg-cm) of torque at 6V is the perfect setup for keeping the Enduro under control on the trail.

STEALTH® X GEARBOX WITH ADJUSTABLE OVERDRIVE GEARS: At the heart of the Enduro is our revolutionary Stealth® X gearbox. Although the exterior appears to have a conventional 3-gear transmission look, the inside is far from conventional. The Stealth® X features the ability to adjust the rear drive ratio independently of the front drive across three levels: stock overdrives the front end 5.7% (installed in RTR), option 1 provides a one-to-one drive ratio front-to-rear (available separately), and option 2 overdrives the front end 11.83% (included with RTR).



BODY FEATURES

ALL IN THE DETAILS. No trail truck would be complete without a detailed and realistic-looking body. The Trailwalker Black is just that, with inspired styling from the 70s and 80s.

The Trailwalker Black comes equipped with a high-strength polycarbonate body that has been pre-painted with a **new** Scratch 'N Weather matte black finish. With this never-before-seen RTR finish, you can either leave it and let nature take its course on the rocks or weather the body to suit your desired look.

The Trailwalker body was designed for both looks and function, featuring a single-piece design with roll bar, injection-molded bumper and D-rings, windshield wipers, folding mirrors, and front grill with working LEDs.

OFFICIAL LICENSED WHEELS AND TIRES: Gripping the trail is a set of officially licensed General Grabber™ X3 tires molded in a high-performance, soft compound rubber.

New: General Grabber™ X3 tires are now mounted on bronze Ocho beadlock wheels. No more worrying if your RTR tires will come unglued.

Watch the video: <https://youtu.be/xOA6HI5GVkY>

MORE FEATURES

- CMS (Chassis Mounted Servo)
- Adjustable front track bar
- Universal front drive axles
- Stamped steel frame rails
- Enclosed receiver box
- 12mm wheel hexes
- Adjustable front and rear bumper mounts
- Adjustable width rock sliders
- Two battery boxes
- Aluminum motor plate
- Adjustable body posts
- Optimized ball cups for more fluid axle articulation
- Adjustable rear shock tower mount positions
- Telescopic driveshafts front and rear
- Extruded aluminum driveshaft splines
- One-piece rear axle design
- Splined front axle with adjustable caster
- Machined input pinion gear
- Metal ring and idler gears
- Machined steel top shaft
- Steel servo horn
- Heavy-duty 5mm diameter steel links
- Metal ball bearings included



SPECIFICATIONS

Scale	1:10
Power	Electric
Length	varies
Width	varies
Weight	varies
Wheelbase	313mm (12.3")
Transmission Ratio	varies

ITEMS NEEDED TO COMPLETE

- **#40119:** Battery pack (Reedy #758)
- **#40119:** Battery charger (Reedy #27201, #27203)
- **#40119, 40119C:** 4 AA batteries for radio (#302)

MORE BODY FEATURES

- Trailwalker Black body thermoformed in high-strength polycarbonate
- Single-piece body with roll bar
- Clear windows
- Molded grill, antennas, and action camera
- Replaceable headlight lenses
- Pivoting side mirrors
- LED headlights
- Adjustable front injection-molded bumper with D-rings
- Removable, injection-molded fairlead
- Realistic styling
- **New,** larger diameter licensed 1.9"x4.65" General Grabber™ X3 tires

UPC	Part #	Description	MAP	MSRP	Available
784695401198	#40119	Enduro Trail Truck, Trailwalker Black RTR	\$389.99	\$569.99	January 2023
784695983786	#40119C	Enduro Trail Truck, Trailwalker Black RTR LiPo Combo	\$469.99	\$689.99	January 2023

Download all above available zipped photos here: <https://tinyurl.com/j2yda962> (14.2MB). Link is active for 30 days.

General Grabber™ is a trademark of CONTINENTAL TIRE NORTH AMERICA, INC. CORPORATION



26021 Commercentre Dr.
Lake Forest, CA 92630-8853 U.S.A.
www.AssociatedElectrics.com

